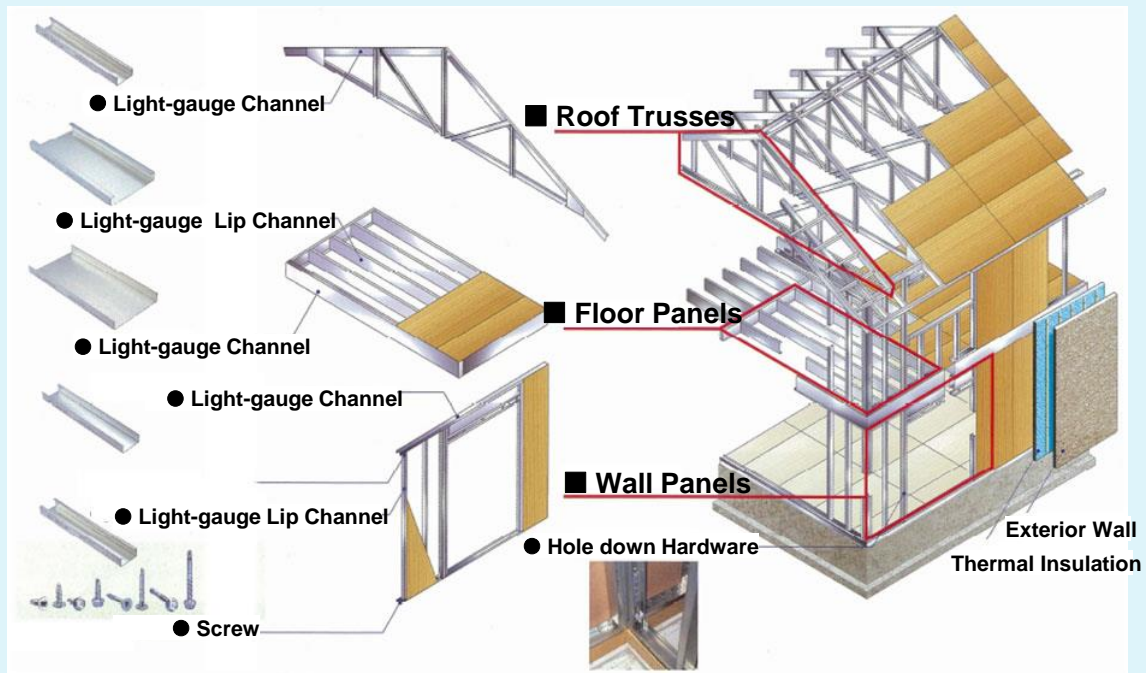


13. Steel Framed House

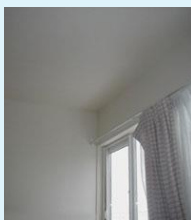
Supply of the cheap and high quality low-rise buildings by the steel framed house system.

■ What's the steel framed house system?

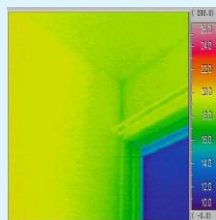
A hybrid panel construction method composed of "wall panel," "floor panel," and "roof panel," in which steel (sheet metal light gauge sections) and structural face materials (such as structural plywood and plasterboard) are used.



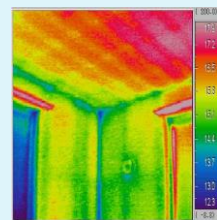
■ Superior energy saving effect by the outside adiabatic construction method



[the case of Steel Framed House:
Room temperature is almost even]



[the case of wooden building
of the heat insulation material filling:
Room temperature is not even]



Applicable sector

House



Apartment Houses



Standard Condition of application

✓ buildings of three-stories or less

Shop



Office



Feature

High quality and short construction period for panels method construction

✓ The sheet metal light gauge section steel is lightweight and easy handling

Superior durability

✓ The sheet metal light gauge section steel is the superior durability by galvanizing

Global-environment-friendly product

- ✓ Superior thermal insulation and airtight performance by external insulation ventilation method
- ✓ Environmental performance(Recycle/Reuse/Reduce)

Track Record

Overseas:

A lot of results in North America and Australia.

Japan:

671 buildings (2826 dwelling units) in fiscal year 2010.

(There are a lot of past records available since its introduction in 1997.)

Cost

For particulars, please contact us using the contact information below.

Contact

The Japan Iron and Steel Federation
Market Development Group

MAIL:sunpou@jssf.or.jp
TEL:+81-3-3669-4815

FAX:+81-3-3667-0245