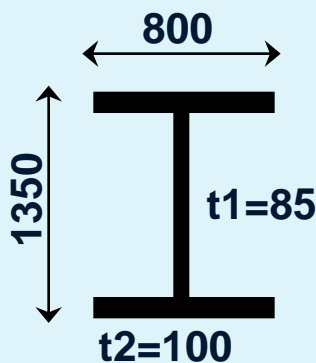


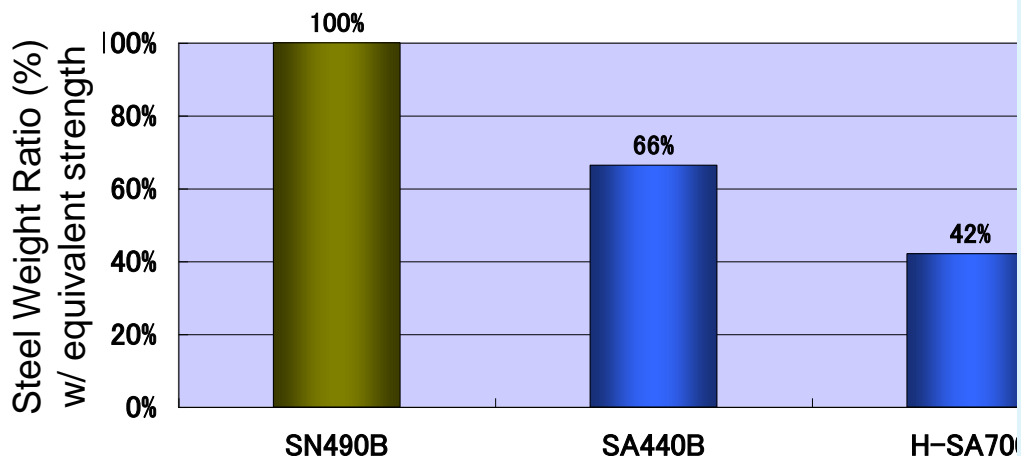
# 05. High Strength Steel for Buildings (SA440·H-SA700)

High Strength Steels have an advantage in downsizing of the large and thick profile member, which results in lighter weight of member.

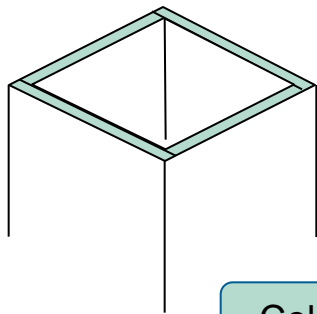
■ Designing with high strength steels, sectional dimensions and steel weights can be reduced remarkably. In addition, fabrication work load can be reduced as well.



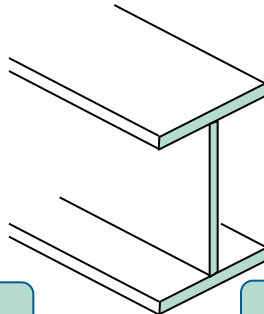
	SN490B	SA440	H-SA700
Fy (N/mm <sup>2</sup> )	295	440	700
Web Thickness t1 (mm)	85	65	40
Flange Thickness t2 (mm)	100	50	35
Section Area (cm <sup>2</sup> )	2578	1711	1085



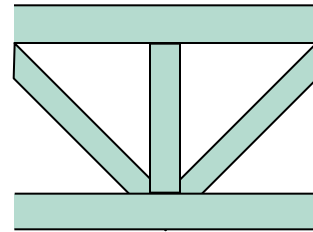
## Applicable Sector



Column



Beam



Truss

Etc.

## Feature

As for SA440 & H-SA700, constant yield strength is specified throughout the thickness range.

Designation	Thickness (mm)	Yield Strength (N/mm <sup>2</sup> )	Tensile Strength (N/mm <sup>2</sup> )	Yield Ratio (%)	Impact Energy (J)	Ceq (%)	Pcm (%)
SN490B	$6 \leq t < 12$	$325 \leq$	490 ~ 610	—  $\leq 80$	[0°C] 27 $\leq$	(t $\leq$ 40) $\leq 0.44$ (40 < t) $\leq 0.46$	$\leq 0.29$
	$12 \leq t < 40$	325 ~ 445					
	$40 \leq t \leq 100$	295 ~ 415					
SA440C	$19 \leq 100$	440 ~ 540	590 ~ 740	$\leq 80$	[0°C] 47 $\leq$	(t $\leq$ 40) $\leq 0.44$ (40 < t) $\leq 0.47$	$\leq 0.28$  $\leq 0.30$
H-SA700B	$6 \leq 50$	700 ~ 900	780 ~ 1000	$\leq 98$	[-20°C] 47 $\leq$	$\leq 0.60$	$\leq 0.30$

## Track Record

Adopted in various applications

## Cost

To get information, please ask the contact shown below.

### Contact

The Japan Iron and Steel Federation  
Market Development Group

MAIL:sunpou@jisy.or.jp  
TEL:+81-3-3669-4815

FAX:+81-3-3667-0245