

02. Cold-formed Rectangular Steel Tubes for Buildings

BCR · BCP

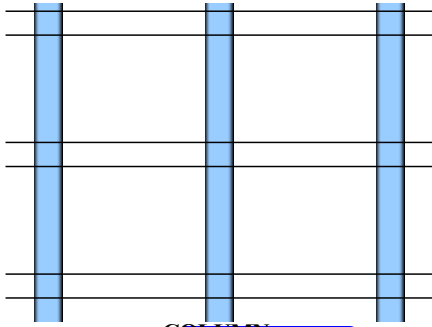
BCR/BCP are supplied with wide range of sections sizes, are used for general structural members such as columns & trusses etc.

■ The sizes of the Rectangular Steel Tubes are ranging from min. width of 150mm unto the max. 1000mm in sectional dimensions. Large sections are manufactured as BCP, and smaller sections are manufactured as BCR.

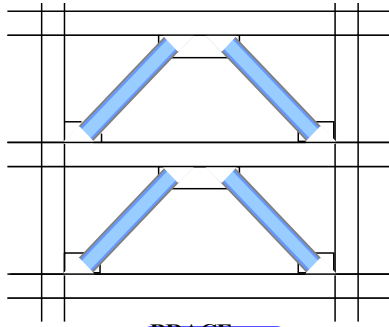
■ Deformation index, which represent the seismic performance of steel materials, is introduced to SN steels along with weldability & toughness indexes.

	Roll-formed square steel tube	Press-formed square steel tube	
Section			
Size* (mm)	□-50 × 1.6 ~ □-550 × 22	□-300 × 9 ~ □-1400 × 50	

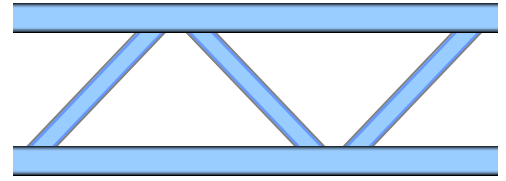
Applicable Sector



Columns



Braces



Trusses

Feature

Item Standard	Seismic resistance		Weldability					Thickness-direction property
	YR Upper limit	YP Upper limit	$\sqrt{E_0}$ Lower limit	C Upper limit	P Upper limit	S Upper limit	Ceq Upper limit	
BCR295	90%	○	27J	0.20	0.030	0.015	0.36	×
BCP235B BCP325B	80%	○	27J	0.20 0.18	0.030	0.015	0.36 0.44	×
BCP235C BCP325C	80%	○	27J	0.20 0.18	0.020	0.008	0.36 0.44	○

Track Record

<Supplied Amount in 2011>

BCR 310,000 ton

BCP 190,000 ton

Cost

To get information, please ask the contact shown below.

Contact

The Japan Iron and Steel Federation
Market Development Group

MAIL:sunpou@jjsf.or.jp

TEL:+81-3-3669-4815

FAX:+81-3-3667-0245