

# GREEN STEEL

## UPON THE APPLICATION OF THE MASS BALANCE APPROACH

### Mass Balance Approach

Allocate CO<sub>2</sub> emission reductions from the project with additionality to designated steel products as environmental value

### Green Steel

Steel products that help customers reduce Scope 3 emissions

**S**teel products are used in a wide range of applications and are indispensable in modern society. Steel demand will steadily increase as the world population and emerging economies grows. Steel scrap can be recovered and recycled into new steel products, but this is not sufficient to meet demand.

Current technology uses carbon (C) to reduce iron ore, which emits large amounts of carbon dioxide (CO<sub>2</sub>). Establishing carbon-free technologies will take time and cost. Although achieving decarbonization in the steel industry is very challenging, we are developing innovative technologies to achieve significant emission reductions in the future while continuing steady efforts to reduce CO<sub>2</sub> emissions.

Today, a wide range of customers, both domestic and international, are increasingly

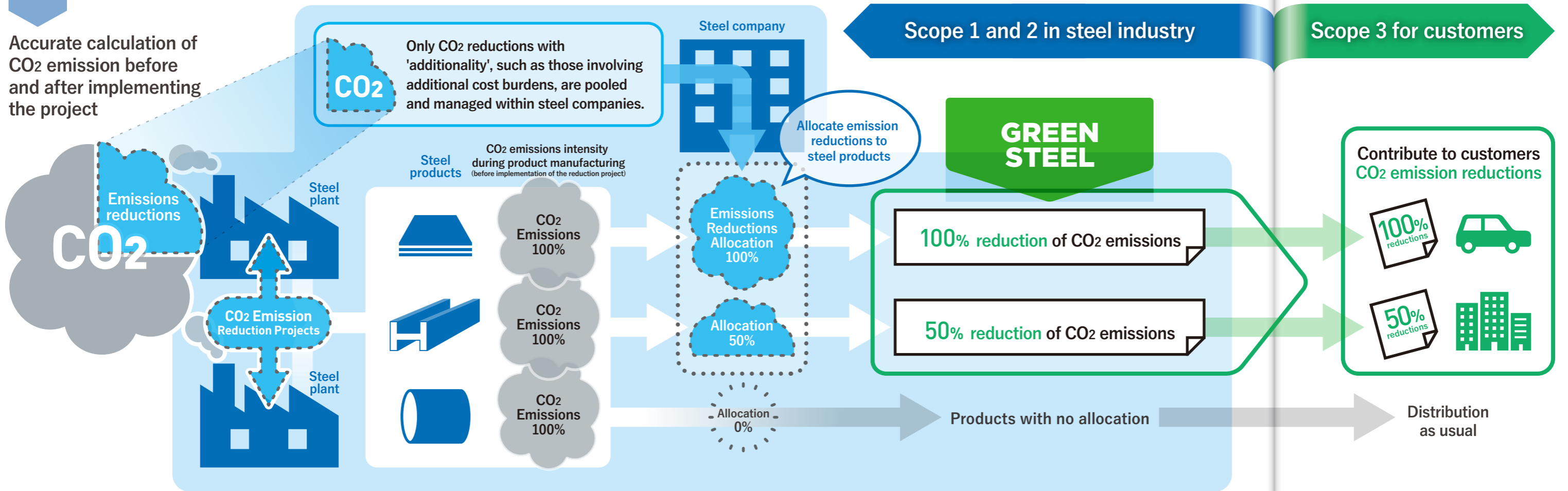
demanding the supply of steel products with reduced emissions. **Green Steel upon the application of the mass balance approach** is the answer to their demand. Steel manufacturers implement projects to reduce greenhouse gas emissions, including CO<sub>2</sub>, at a cost that exceeds economic rationality, and evaluate the reductions with third-party certification, which is attached to any steel product. Reducing CO<sub>2</sub> emissions" in the steel industry is crucial to the decarbonization of not only Japan but the entire world. During the long and difficult decarbonization transition period of steel industry, Green Steel upon the application of mass balance approach is an important solution to exchange emissions reductions with economic value, enabling priority supply of green steel to customers who appreciate the value of the reductions.



一般社団法人 日本鉄鋼連盟  
The Japan Iron and Steel Federation

# Concept: Steel mass balance approach

**GREEN STEEL**  
UPON THE APPLICATION OF  
THE MASS BALANCE APPROACH



## Step 1 Calculate CO2 emissions intensity of the steel products

- Comply with ISO 20915 or JIS Q 20915 (Life cycle inventory calculation methodology for steel products standard)
- CO2 emissions calculated in Step 1 excludes reduction effect of CO2 emission reduction projects

Transparency ensured by the third party verification

## Step 2 Identify CO2 emission reduction project and determine CO2 emission reduction amounts

- Comply with ISO 14064 (Greenhouse Gas)
- CO2 emission reduction projects must be i) within the organization, ii) with additional cost burden and iii) with calculable actual emission reductions
- The requirements for the CO2 emission reduction projects is constantly verified

## Step 3 Issue reduction certificate Supply steel products with reduction certificate

- Refer to the mass balance model in ISO 22095 (Chain of custody)
- CO2 emissions reductions from reduction projects are provided to the customers in the form of **emission reduction certificate** along with the steel products. Emission reduction credits cannot be allocated, certified or issued in excess of the total project reductions.
- Customers who purchase a product with an emission reduction certificate can reduce their Scope 3 Category 1 emission
- The reduction certificates by themselves should not be distributed in the market

No double counting of emission reductions for EPD/CFP and reduction certificates

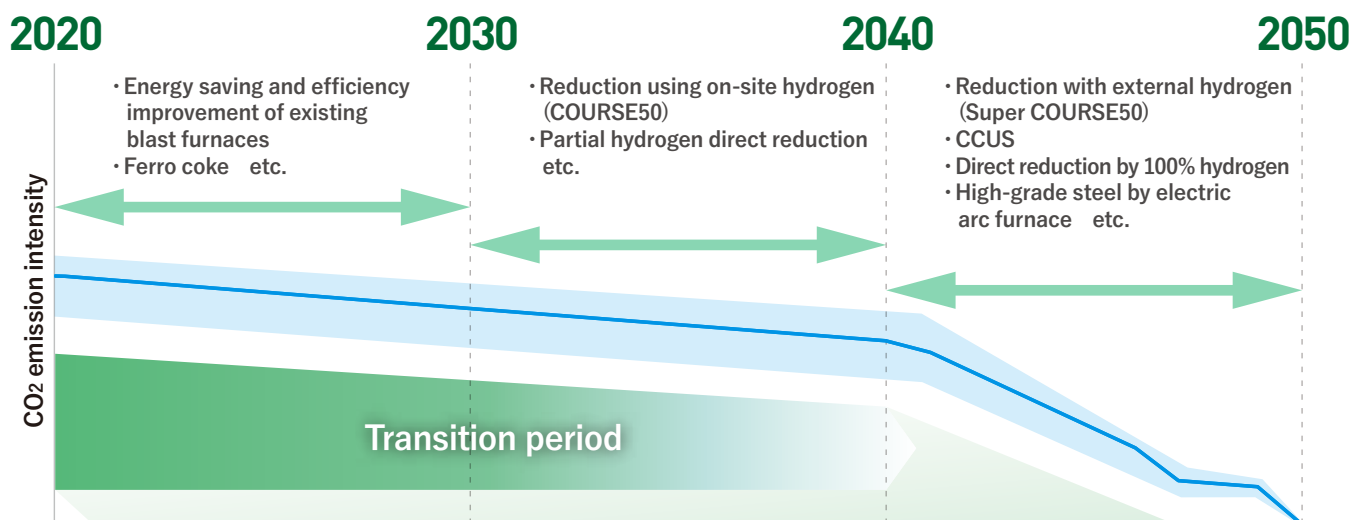
Mass balance approach is an important solution to enable supply of Green Steel to customers during the transition period toward carbon neutrality

# Role of Green Steel upon the application of the mass balance approach in the pathways toward carbon neutrality

**J**apan's steel industry has achieved the world's highest level of energy efficiency, but to achieve carbon neutrality by 2050, it will be necessary to commercialize innovative technologies such as hydrogen-reduced ironmaking, high-grade steel production using electric arc furnaces, and CCUS (CO<sub>2</sub> capture, utilization, and storage). Huge capital investment will be required too.

Currently, there are no steel companies in the world capable of producing steel products that can immediately and significantly reduce CO<sub>2</sub> emissions, and commercialization is expected to finally become possible around 2040. During the transitional period until then, **providing Green Steel upon the application of the mass balance approach is the only way to meet the green material needs of customers.**

## CO<sub>2</sub> emission reduction (images/examples)



Source: JISF based on METI documents

## Importance of Green Steel during the transition period

**GREEN STEEL**

- Emission reductions in the steel industry require large capital investments and significant increases in manufacturing costs. As compensation for the environmental value provided by green steel, we think it is unavoidable to share the cost of emission reductions throughout the entire value chain and throughout society as a whole.
- Major international and domestic steel companies such as Nippon Steel, JFE Steel, and Kobe Steel have already branded their Green Steel based on the mass balance approach and begun selling some of them.
- JISF members will promote CO<sub>2</sub> emission reduction projects consistent with the roadmap established by the Japanese government, such as the "GX Promotion Strategy".

**Greenhouse gases (GHG)** constitute a group of gases contributing to global warming and climate change. Scope 1, Scope 2, and Scope 3 emissions are categories used to classify greenhouse gas emissions based on their sources.

Scope 1 Emissions: Direct emissions from sources

Scope 2 Emissions: Indirect emissions from the generation of purchased electricity, heating, and cooling consumed by the organization

Scope 3 Emissions: Indirect emissions from activities that occur outside the organization's own operations but are related to the organization's activities

**Carbon Footprint (CFP)** refers to the amount of greenhouse gases emitted throughout the lifecycle of products and services, from raw material procurement to disposal and recycling.



一般社団法人 日本鉄鋼連盟  
The Japan Iron and Steel Federation