

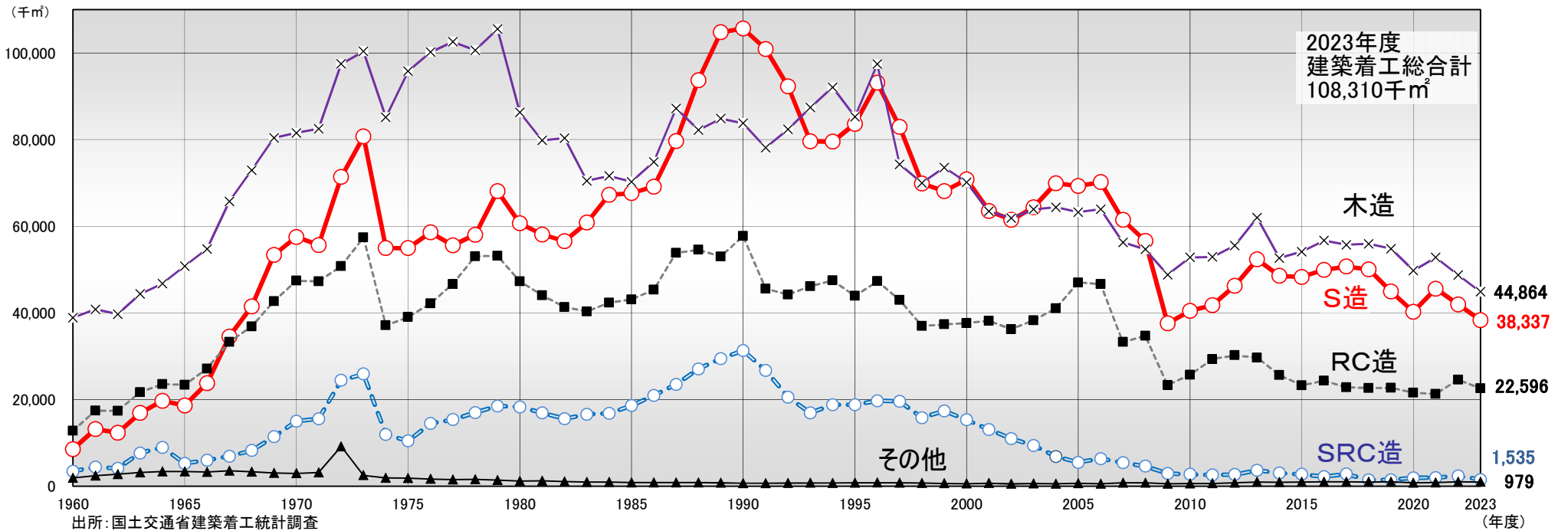
鉄骨建築関連統計・図表

○ 主要建築構造用鋼材関連統計図表	1
○ 普通鋼鋼材国内最終用途ベース受注量の推計（2021・2022年度）	2
○ 鉄骨需要量の年度別推移表（推定）	3
○ 鉄骨造規模別着工床面積構成比（2019～2023年度・棒グラフ）	4
○ 同（年度別推移）	5
○ 鉄骨造階数別着工床面積年度別推移（棒グラフ）	6
○ 同（時系列表）	7

2024年5月

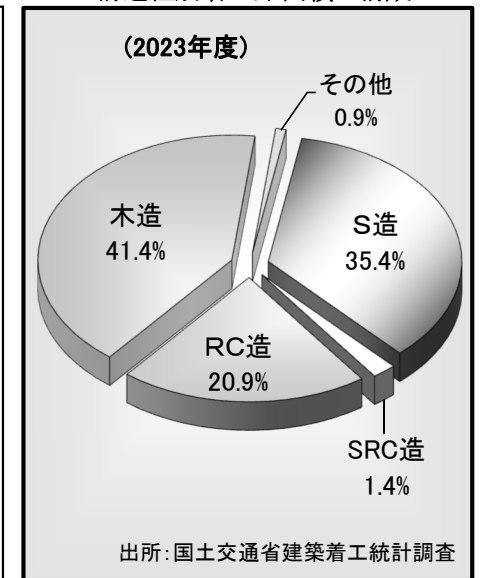
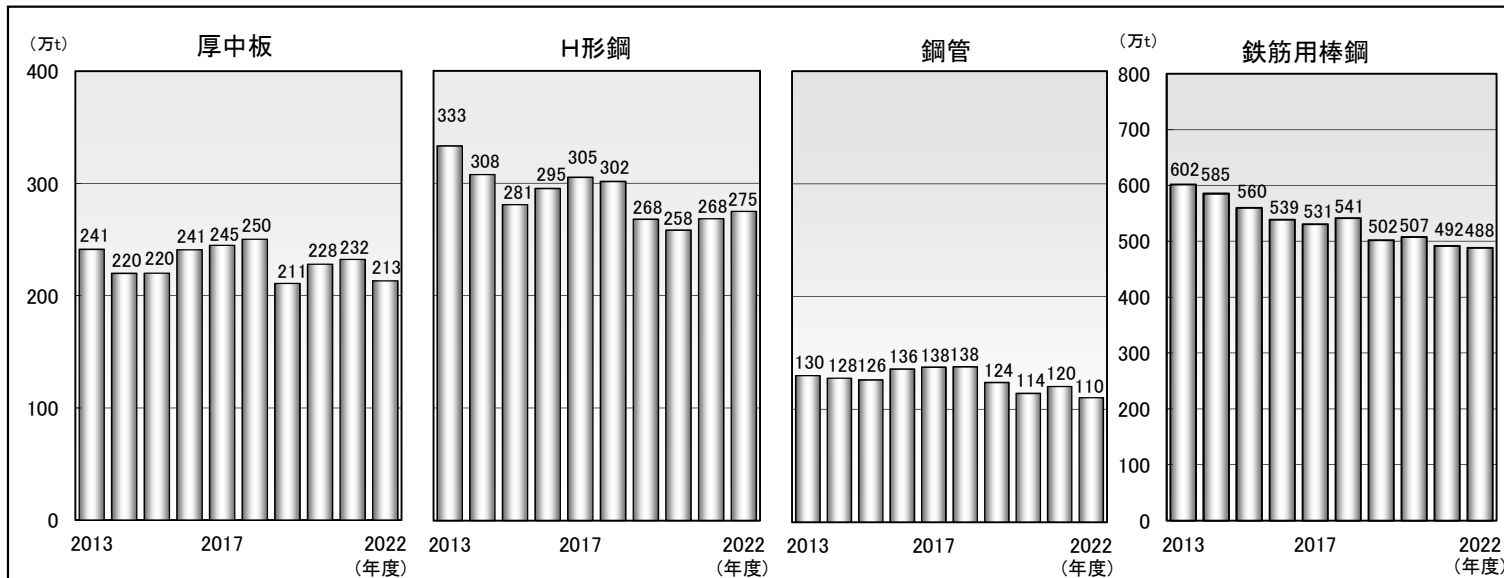
一般社団法人日本鉄鋼連盟 建築委員会

主要建築構造用鋼材関連統計図表

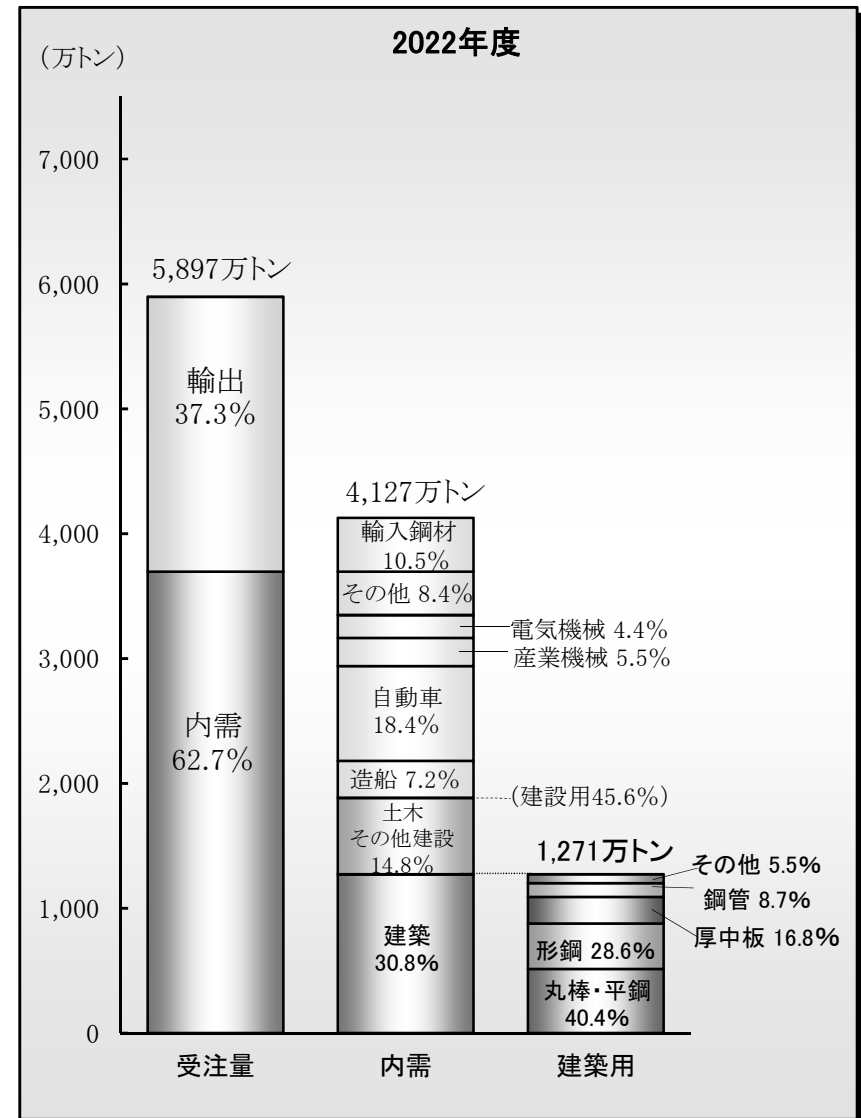
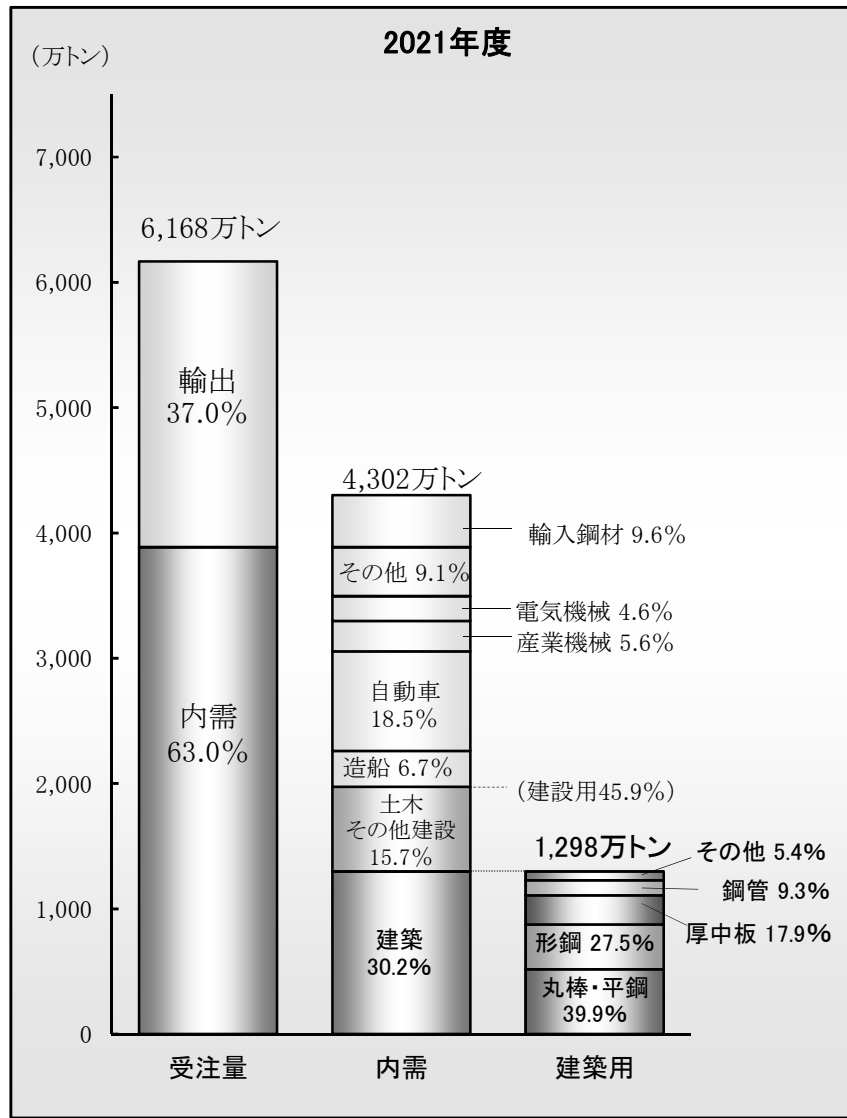


普通鋼鋼材国内最終用途ベース建築向け受注量の推計

構造種別着工床面積の構成比



普通鋼鋼材国内最終用途ベース受注量の推計



出所: 普通鋼地域別用途別受注統計表

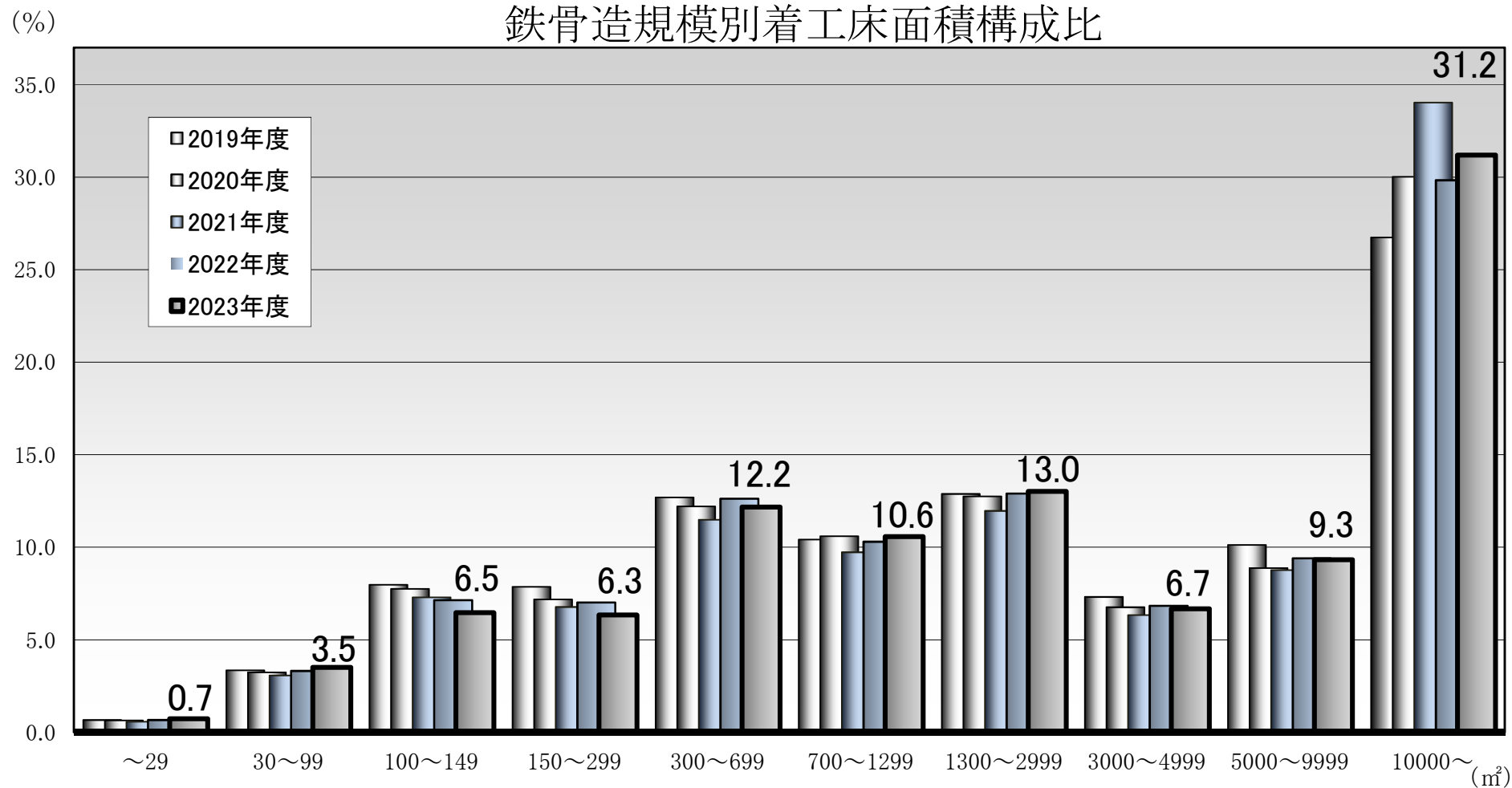
鉄骨需要量の年度別推移表(推定)

(単位:千トン, %)

年度	鉄骨造		鉄骨鉄筋コンクリート造		合計	
		前年度比		前年度比		前年度比
1959	497		85		583	
1960	855	72.0%	173	102.6%	1,028	76.5%
1961	1,318	54.1%	220	27.2%	1,538	49.6%
1962	1,232	▲6.5%	206	▲6.4%	1,438	▲6.5%
1963	1,689	37.0%	381	85.0%	2,070	43.9%
1964	1,970	16.6%	447	17.2%	2,417	16.7%
1965	1,860	▲5.6%	262	▲41.3%	2,122	▲12.2%
1966	2,374	27.6%	299	13.9%	2,673	25.9%
1967	3,456	45.6%	345	15.3%	3,800	42.2%
1968	4,147	20.0%	412	19.4%	4,559	20.0%
1969	5,341	28.8%	572	39.1%	5,913	29.7%
1970	5,753	7.7%	749	30.8%	6,502	9.9%
1971	5,566	▲3.3%	779	4.0%	6,345	▲2.4%
1972	7,138	28.2%	1,221	56.8%	8,359	31.7%
1973	8,073	13.1%	1,295	6.0%	9,367	12.1%
1974	5,497	▲31.9%	598	▲53.9%	6,095	▲34.9%
1975	5,496	▲0.0%	522	▲12.7%	6,018	▲1.3%
1976	5,858	6.6%	725	38.9%	6,583	9.4%
1977	5,561	▲5.1%	768	6.0%	6,329	▲3.9%
1978	5,806	4.4%	848	10.4%	6,654	5.1%
1979	6,814	17.4%	925	9.1%	7,739	16.3%
1980	6,069	▲10.9%	915	▲1.1%	6,984	▲9.8%
1981	5,811	▲4.3%	847	▲7.5%	6,658	▲4.7%
1982	5,656	▲2.7%	778	▲8.2%	6,433	▲3.4%
1983	6,085	7.6%	828	6.5%	6,913	7.5%
1984	6,727	10.5%	841	1.5%	7,567	9.5%
1985	6,765	0.6%	929	10.6%	7,694	1.7%
1986	6,915	2.2%	1,046	12.6%	7,962	3.5%
1987	7,967	15.2%	1,175	12.3%	9,142	14.8%
1988	9,373	17.6%	1,352	15.1%	10,725	17.3%
1989	10,480	11.8%	1,472	8.9%	11,952	11.4%
1990	10,564	0.8%	1,565	6.3%	12,129	1.5%
1991	10,090	▲4.5%	1,335	▲14.7%	11,426	▲5.8%
1992	9,230	▲8.5%	1,027	▲23.1%	10,257	▲10.2%
1993	7,961	▲13.8%	846	▲17.6%	8,807	▲14.1%
1994	7,953	▲0.1%	939	10.9%	8,892	1.0%
1995	8,366	5.2%	939	0.0%	9,304	4.6%
1996	9,314	11.3%	984	4.8%	10,298	10.7%
1997	8,295	▲10.9%	979	▲0.5%	9,274	▲9.9%
1998	6,986	▲15.8%	789	▲19.4%	7,775	▲16.2%
1999	6,811	▲2.5%	868	10.0%	7,679	▲1.2%
2000	7,081	4.0%	765	▲11.8%	7,846	2.2%
2001	6,354	▲10.3%	653	▲14.7%	7,007	▲10.7%
2002	6,147	▲3.3%	548	▲16.0%	6,695	▲4.5%
2003	6,438	4.7%	470	▲14.2%	6,908	3.2%
2004	6,993	8.6%	342	▲27.3%	7,335	6.2%
2005	6,933	▲0.9%	273	▲20.2%	7,206	▲1.8%
2006	7,019	1.2%	316	15.8%	7,335	1.8%
2007	6,147	▲12.4%	272	▲13.8%	6,419	▲12.5%
2008	5,664	▲7.9%	230	▲15.4%	5,894	▲8.2%
2009	3,759	▲33.6%	147	▲36.2%	3,906	▲33.7%
2010	4,048	7.7%	137	▲7.0%	4,184	7.1%
2011	4,179	3.2%	131	▲4.3%	4,310	3.0%
2012	4,626	10.7%	134	2.5%	4,760	10.4%
2013	5,234	13.2%	182	36.1%	5,417	13.8%
2014	4,855	▲7.2%	151	▲17.2%	5,006	▲7.6%
2015	4,830	▲0.5%	136	▲9.6%	4,967	▲0.8%
2016	4,995	3.4%	109	▲20.4%	5,104	2.8%
2017	5,070	1.5%	139	28.4%	5,210	2.1%
2018	5,005	▲1.3%	73	▲47.5%	5,078	▲2.5%
2019	4,493	▲10.2%	74	1.0%	4,567	▲10.1%
2020	4,027	▲10.4%	95	27.9%	4,121	▲9.7%
2021	4,558	13.2%	98	3.9%	4,656	13.0%
2022	4,197	▲7.9%	119	21.0%	4,316	▲7.3%
2023	3,834	▲8.7%	77	▲35.5%	3,910	▲9.4%

(注)算出方法: S造=床面積㎡×100kg, SRC造=床面積㎡×50kg

鉄骨造規模別着工床面積構成比



	2019年度	2020年度	2021年度	2022年度	2023年度
鉄骨造着工床面積	4,493万m ²	4,027万m ²	4,558万m ²	4,197万m ²	3,834万m ²
鉄骨造着工棟数	10万9千棟	9万5千棟	10万0千棟	9万7千棟	8万8千棟
1棟当り平均床面積	411m ²	424m ²	457m ²	432m ²	437m ²
1棟当り推定鉄骨量	41トﾝ	42トﾝ	46トﾝ	43トﾝ	44トﾝ

出所: 国土交通省建築着工統計調査

鉄骨造規模別着工床面積構成比の年度別推移

(単位:%)

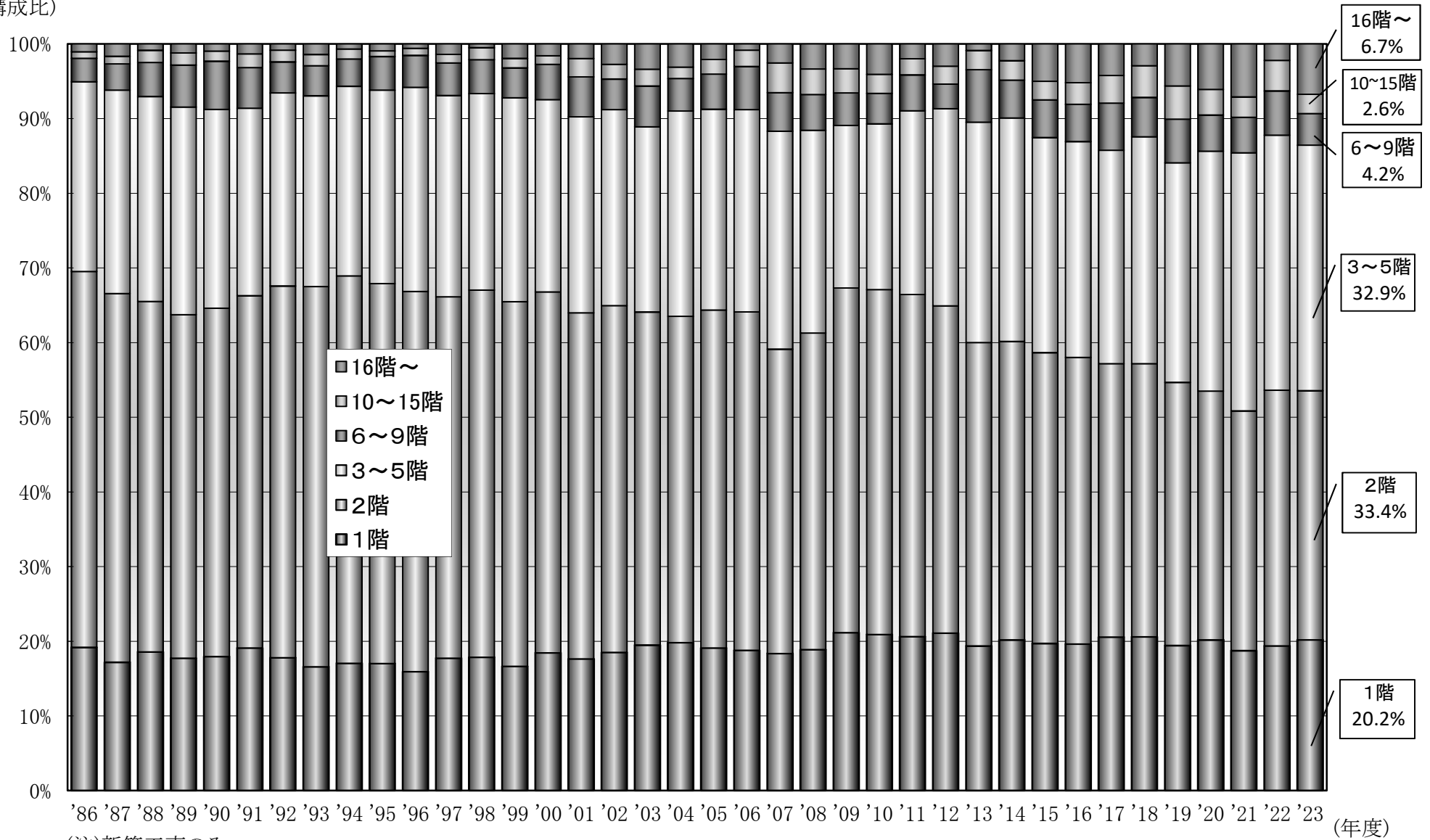
年度	29㎡以下	30～99㎡	100～149㎡	150～299㎡	300～699㎡	700～1299㎡	1300～2999㎡	3000～4999㎡	5000～9999㎡	10000㎡以上
1986	0.5	5.6	11.5	20.1	23.1	12.7	11.5	4.7	4.4	6.0
1987	0.4	4.7	11.4	20.3	22.4	12.7	11.1	4.8	4.6	6.6
1988	0.4	3.9	9.2	18.1	22.1	13.2	12.2	5.6	6.1	9.3
1989	0.4	3.4	8.5	17.2	21.1	13.3	12.9	6.1	6.3	10.8
1990	0.3	3.2	8.1	17.0	20.2	13.4	13.7	6.8	6.9	10.3
1991	0.3	3.2	7.8	17.0	20.0	12.7	13.5	6.3	7.1	12.1
1992	0.4	3.4	8.4	18.9	21.0	12.7	12.9	5.9	6.5	9.9
1993	0.4	3.8	10.4	21.2	20.3	11.8	12.0	5.3	6.0	8.8
1994	0.5	3.9	11.1	22.2	18.9	11.1	11.5	5.3	6.2	9.3
1995	0.4	4.2	11.5	21.6	17.7	10.6	11.7	6.1	6.4	9.8
1996	0.4	3.6	10.9	21.7	16.8	9.9	11.2	6.1	7.1	12.3
1997	0.4	3.5	9.7	19.1	16.3	10.2	12.3	6.5	7.8	14.2
1998	0.4	3.8	10.5	20.0	15.4	9.6	11.4	6.3	7.8	14.9
1999	0.4	3.8	11.4	20.7	15.0	9.0	10.9	5.8	6.7	16.3
2000	0.4	3.4	10.7	18.8	14.9	9.2	11.8	6.5	8.8	15.5
2001	0.4	3.6	10.4	18.4	15.7	9.8	11.7	6.4	7.7	15.9
2002	0.4	3.5	10.6	17.8	14.9	9.8	11.2	6.0	8.2	17.6
2003	0.4	3.2	10.2	16.3	14.4	9.8	12.4	6.3	8.4	18.6
2004	0.4	2.9	9.6	14.5	13.6	9.2	12.3	6.5	8.3	22.5
2005	0.4	2.8	9.2	13.6	13.1	9.1	12.5	6.8	9.1	23.4
2006	0.4	2.8	9.2	13.2	12.9	9.3	12.4	7.0	10.0	22.9
2007	0.4	2.7	9.2	11.9	11.7	8.2	10.9	6.2	9.1	29.8
2008	0.5	2.7	9.2	11.7	12.8	9.0	12.5	7.1	10.3	24.2
2009	0.7	3.7	12.6	13.8	14.1	9.3	11.9	6.3	8.0	19.6
2010	0.6	3.5	12.2	13.2	13.7	9.9	13.5	6.6	8.4	18.3
2011	0.6	3.5	11.6	12.9	13.2	10.0	13.7	7.0	8.7	18.8
2012	0.6	3.3	10.6	12.1	13.3	9.7	14.0	7.0	8.9	20.4
2013	0.6	3.2	9.4	11.2	13.1	9.7	13.3	6.9	9.8	23.0
2014	0.6	3.2	8.6	10.6	13.5	10.0	13.7	6.7	9.6	23.5
2015	0.7	3.3	8.4	10.1	14.0	10.2	13.1	7.1	8.9	24.3
2016	0.7	3.2	8.1	9.5	13.8	10.7	13.2	7.3	9.4	24.2
2017	0.6	3.2	7.6	8.7	13.7	10.7	13.5	7.4	9.9	24.7
2018	0.6	3.2	7.6	8.3	13.2	10.4	13.2	7.7	10.2	25.6
2019	0.7	3.4	8.0	7.9	12.7	10.4	12.9	7.3	10.1	26.7
2020	0.6	3.2	7.8	7.2	12.2	10.6	12.8	6.8	8.9	30.0
2021	0.6	3.1	7.3	6.8	11.5	9.7	12.0	6.3	8.8	34.0
2022	0.7	3.3	7.1	7.0	12.6	10.3	12.9	6.8	9.4	29.8
2023	0.7	3.5	6.5	6.3	12.2	10.6	13.0	6.7	9.3	31.2
前年度比	0.0	0.2	▲ 0.6	▲ 0.7	▲ 0.4	0.3	0.1	▲ 0.1	▲ 0.1	1.4

注:前年度比は最新年度から前年度の構成比を差引して算出

出所:国土交通省建築着工統計調査

鉄骨造 階数別着工床面積 年度別推移(構成比)

(構成比)



(注)新築工事のみ

出所:国土交通省建築着工統計調査

鉄骨造 階数別着工床面積 年度別推移

(単位:千㎡)

年度	合計		1階			2階			3～5階			6～9階			10～15階			16階～		
	前年比	構成比	前年比	構成比	前年比	構成比	前年比	構成比	前年比	構成比	前年比	構成比	前年比	構成比	前年比	構成比	前年比	構成比		
1986	49,040	—	9,403	—	19.2%	24,687	—	50.3%	12,460	—	25.4%	1,547	—	3.2%	429	—	0.9%	514	—	1.0%
1987	57,347	16.9%	9,854	4.8%	17.2%	28,316	14.7%	49.4%	15,634	25.5%	27.3%	2,003	29.5%	3.5%	584	36.1%	1.0%	956	86.0%	1.7%
1988	66,085	15.2%	12,273	24.5%	18.6%	31,010	9.5%	46.9%	18,146	16.1%	27.5%	3,017	50.6%	4.6%	1,073	83.7%	1.6%	566	▲40.8%	0.9%
1989	73,844	11.7%	13,093	6.7%	17.7%	33,976	9.6%	46.0%	20,531	13.1%	27.8%	4,145	37.4%	5.6%	1,199	11.7%	1.6%	900	59.0%	1.2%
1990	75,180	1.8%	13,497	3.1%	18.0%	35,065	3.2%	46.6%	20,029	▲2.4%	26.6%	4,847	16.9%	6.4%	1,011	▲15.7%	1.3%	731	▲18.8%	1.0%
1991	73,287	▲2.5%	13,999	3.7%	19.1%	34,567	▲1.4%	47.2%	18,410	▲8.1%	25.1%	3,981	▲17.9%	5.4%	1,344	32.9%	1.8%	986	34.9%	1.3%
1992	68,854	▲6.0%	12,246	▲12.5%	17.8%	34,283	▲0.8%	49.8%	17,801	▲3.3%	25.9%	2,864	▲28.1%	4.2%	1,090	▲18.9%	1.6%	570	▲42.2%	0.8%
1993	60,455	▲12.2%	10,027	▲18.1%	16.6%	30,777	▲10.2%	50.9%	15,446	▲13.2%	25.5%	2,440	▲14.8%	4.0%	911	▲16.4%	1.5%	853	49.6%	1.4%
1994	59,069	▲2.3%	10,075	0.5%	17.1%	30,633	▲0.5%	51.9%	15,010	▲2.8%	25.4%	2,156	▲11.6%	3.6%	790	▲13.3%	1.3%	405	▲52.5%	0.7%
1995	62,420	5.7%	10,623	5.4%	17.0%	31,761	3.7%	50.9%	16,166	7.7%	25.9%	2,812	30.4%	4.5%	474	▲40.0%	0.8%	583	44.0%	0.9%
1996	68,453	9.7%	10,904	2.6%	15.9%	34,851	9.7%	50.9%	18,721	15.8%	27.3%	2,924	4.0%	4.3%	641	35.2%	0.9%	412	▲29.3%	0.6%
1997	59,753	▲12.7%	10,601	▲2.8%	17.7%	28,913	▲17.0%	48.4%	16,102	▲14.0%	26.9%	2,614	▲10.6%	4.4%	687	7.2%	1.1%	836	102.9%	1.4%
1998	51,196	▲14.3%	9,142	▲13.8%	17.9%	25,172	▲12.9%	49.2%	13,474	▲16.3%	26.3%	2,321	▲11.2%	4.5%	823	19.8%	1.6%	263	▲68.5%	0.5%
1999	50,417	▲1.5%	8,387	▲8.3%	16.6%	24,629	▲2.2%	48.9%	13,764	2.2%	27.3%	2,016	▲13.1%	4.0%	641	▲22.1%	1.3%	980	272.6%	1.9%
2000	50,627	0.4%	9,343	11.4%	18.5%	24,466	▲0.7%	48.3%	13,041	▲5.3%	25.8%	2,396	18.8%	4.7%	579	▲9.7%	1.1%	802	▲18.2%	1.6%
2001	46,032	▲9.1%	8,121	▲13.1%	17.6%	21,329	▲12.8%	46.3%	12,085	▲7.3%	26.3%	2,462	2.8%	5.3%	1,135	96.0%	2.5%	900	12.2%	2.0%
2002	44,904	▲2.5%	8,309	2.3%	18.5%	20,856	▲2.2%	46.4%	11,782	▲2.5%	26.2%	1,842	▲25.2%	4.1%	889	▲21.7%	2.0%	1,226	36.2%	2.7%
2003	48,036	7.0%	9,359	12.6%	19.5%	21,426	2.7%	44.6%	11,922	1.2%	24.8%	2,616	42.0%	5.4%	1,083	21.8%	2.3%	1,631	33.0%	3.4%
2004	50,624	5.4%	10,029	7.2%	19.8%	22,119	3.2%	43.7%	13,931	16.8%	27.5%	2,195	▲16.1%	4.3%	775	▲28.4%	1.5%	1,576	▲3.4%	3.1%
2005	49,914	▲1.4%	9,529	▲5.0%	19.1%	22,594	2.1%	45.3%	13,420	▲3.7%	26.9%	2,353	7.2%	4.7%	974	25.7%	2.0%	1,044	▲33.7%	2.1%
2006	49,515	▲0.8%	9,300	▲2.4%	18.8%	22,442	▲0.7%	45.3%	13,420	▲0.0%	27.1%	2,852	21.2%	5.8%	1,087	11.7%	2.2%	415	▲60.2%	0.8%
2007	45,310	▲8.5%	8,320	▲10.5%	18.4%	18,465	▲17.7%	40.8%	13,229	▲1.4%	29.2%	2,334	▲18.2%	5.2%	1,811	66.5%	4.0%	1,152	177.5%	2.5%
2008	41,826	▲15.5%	7,893	▲15.1%	18.9%	17,736	▲21.0%	42.4%	11,356	▲15.4%	27.2%	2,007	▲29.6%	4.8%	1,427	31.2%	3.4%	1,407	238.9%	3.4%
2009	28,193	▲32.6%	5,962	▲24.5%	21.1%	13,016	▲26.6%	46.2%	6,140	▲45.9%	21.8%	1,225	▲38.9%	4.3%	911	▲36.1%	3.2%	938	▲33.3%	3.3%
2010	30,353	7.7%	6,346	6.4%	20.9%	14,019	7.7%	46.2%	6,735	9.7%	22.2%	1,243	1.4%	4.1%	774	▲15.1%	2.5%	1,236	31.8%	4.1%
2011	30,446	0.3%	6,277	▲1.1%	20.6%	13,954	▲0.5%	45.8%	7,487	11.2%	24.6%	1,464	17.8%	4.8%	657	▲15.0%	2.2%	607	▲50.9%	2.0%
2012	34,679	13.9%	7,313	16.5%	21.1%	15,199	8.9%	43.8%	9,154	22.3%	26.4%	1,146	▲21.7%	3.3%	828	25.9%	2.4%	1,039	71.1%	3.0%
2013	39,056	12.6%	7,564	3.4%	19.4%	15,870	4.4%	40.6%	11,532	26.0%	29.5%	2,737	138.9%	7.0%	1,007	21.7%	2.6%	346	▲66.7%	0.9%
2014	36,746	▲5.9%	7,414	▲2.0%	20.2%	14,684	▲7.5%	40.0%	11,000	▲4.6%	29.9%	1,870	▲31.7%	5.1%	951	▲5.6%	2.6%	828	139.5%	2.3%
2015	36,213	▲1.4%	7,136	▲3.7%	19.7%	14,103	▲4.0%	38.9%	10,431	▲5.2%	28.8%	1,826	▲2.3%	5.0%	901	▲5.3%	2.5%	1,817	119.6%	5.0%
2016	37,340	3.1%	7,325	2.6%	19.6%	14,332	1.6%	38.4%	10,800	3.5%	28.9%	1,864	2.1%	5.0%	1,077	19.6%	2.9%	1,941	6.8%	5.2%
2017	37,511	0.5%	7,713	5.3%	20.6%	13,736	▲4.2%	36.6%	10,723	▲0.7%	28.6%	2,363	26.8%	6.3%	1,391	29.1%	3.7%	1,586	▲18.3%	4.2%
2018	36,906	▲1.6%	7,599	▲1.5%	20.6%	13,496	▲1.7%	36.6%	11,217	4.6%	30.4%	1,948	▲17.6%	5.3%	1,569	12.8%	4.3%	1,076	▲32.1%	2.9%
2019	34,227	▲7.3%	6,650	▲12.5%	19.4%	12,060	▲10.6%	35.2%	10,063	▲10.3%	29.4%	2,004	2.9%	5.9%	1,524	▲2.9%	4.5%	1,925	78.8%	5.6%
2020	30,991	▲9.5%	6,253	▲6.0%	20.2%	10,328	▲14.4%	33.3%	9,960	▲1.0%	32.1%	1,496	▲25.4%	4.8%	1,064	▲30.2%	3.4%	1,890	▲1.8%	6.1%
2021	35,510	14.6%	6,655	6.4%	18.7%	11,398	10.4%	32.1%	12,274	23.2%	34.6%	1,690	12.9%	4.8%	970	▲8.9%	2.7%	2,523	33.5%	7.1%
2022	32,116	▲9.6%	6,221	▲6.5%	19.4%	11,000	▲3.5%	34.3%	10,972	▲10.6%	34.2%	1,899	12.4%	5.9%	1,316	35.7%	4.1%	708	▲72.0%	2.2%
2023	29,517	▲8.1%	5,960	▲4.2%	20.2%	9,845	▲10.5%	33.4%	9,708	▲11.5%	32.9%	1,251	▲34.1%	4.2%	764	▲42.0%	2.6%	1,989	181.1%	6.7%

(注)新築工事のみ

出所:国土交通省建築着工統計調査