

The Japan Iron and Steel Federation

The Japan Iron and Steel Federation (JISF) was established in November 1948. In November 2001, it was completely reorganized through consolidation with the Kozai Club Foundation and the Japan Iron & Steel Exporters' Association. The JISF is a nationwide representative body of the Japanese steel industry and its members consist of the country's major iron and steel producers, trading companies engaged in steel distribution, and other associations related to iron and steel.

Steel is a basic material indispensable for industrial development and the improvement of people's lives. It is also one of Japan's most important exports. The JISF contributes to the

sound growth of the national economy and promotes international cooperation by taking on challenges from the overall standpoint of the Japanese steel industry. To these ends, the JISF carries out extensive activities that include compiling statistics and conducting research and studies on steel production, demand and distribution; promoting the development and diffusion of new technologies for steel production and products; addressing environmental issues; improving and streamlining work and management conditions; enhancing standardization and promoting fair steel trade.

Successive Chairman

Term	Chairman	Period
1 st	Takashi MIKI	November 1948 ~ April 1952
2 nd	Gisuke WATANABE	May 1952 ~ January 1956
3 rd	Shinichi KOJIMA	February 1956 ~ April 1963
4 th	Shigeo NAGANO	April 1963 ~ April 1965
5 th	Yoshihiro INAYAMA	April 1965 ~ April 1979
6 th	Eishiro SAITO	April 1979 ~ April 1984
7 th	Yutaka TAKEDA	April 1984 ~ May 1989
8 th	Hiroshi SAITO	May 1989 ~ May 1995
9 th	Takashi IMAI	May 1995 ~ May 1998
10 th	Akira CHIHAYA	May 1998 ~ May 2003
11 th	Akio MIMURA	May 2003 ~ May 2006
12 th	Hajime BADA	May 2006 ~ May 2008
13 th	Shoji MUNEOKA	May 2008 ~ May 2010
14 th	Eiji HAYASHIDA	May 2010 ~ May 2012
15 th	Hiroshi TOMONO	May 2012 ~ May 2014
16 th	Eiji HAYASHIDA	May 2014 ~ March 2015
17 th	Koji KAKIGI	March 2015 ~ May 2016
18 th	Kosei SHINDO	May 2016 ~ May 2018
19 th	Koji KAKIGI	May 2018 ~ March 2019
20 th	Yoshihisa KITANO	March 2019 ~ Present

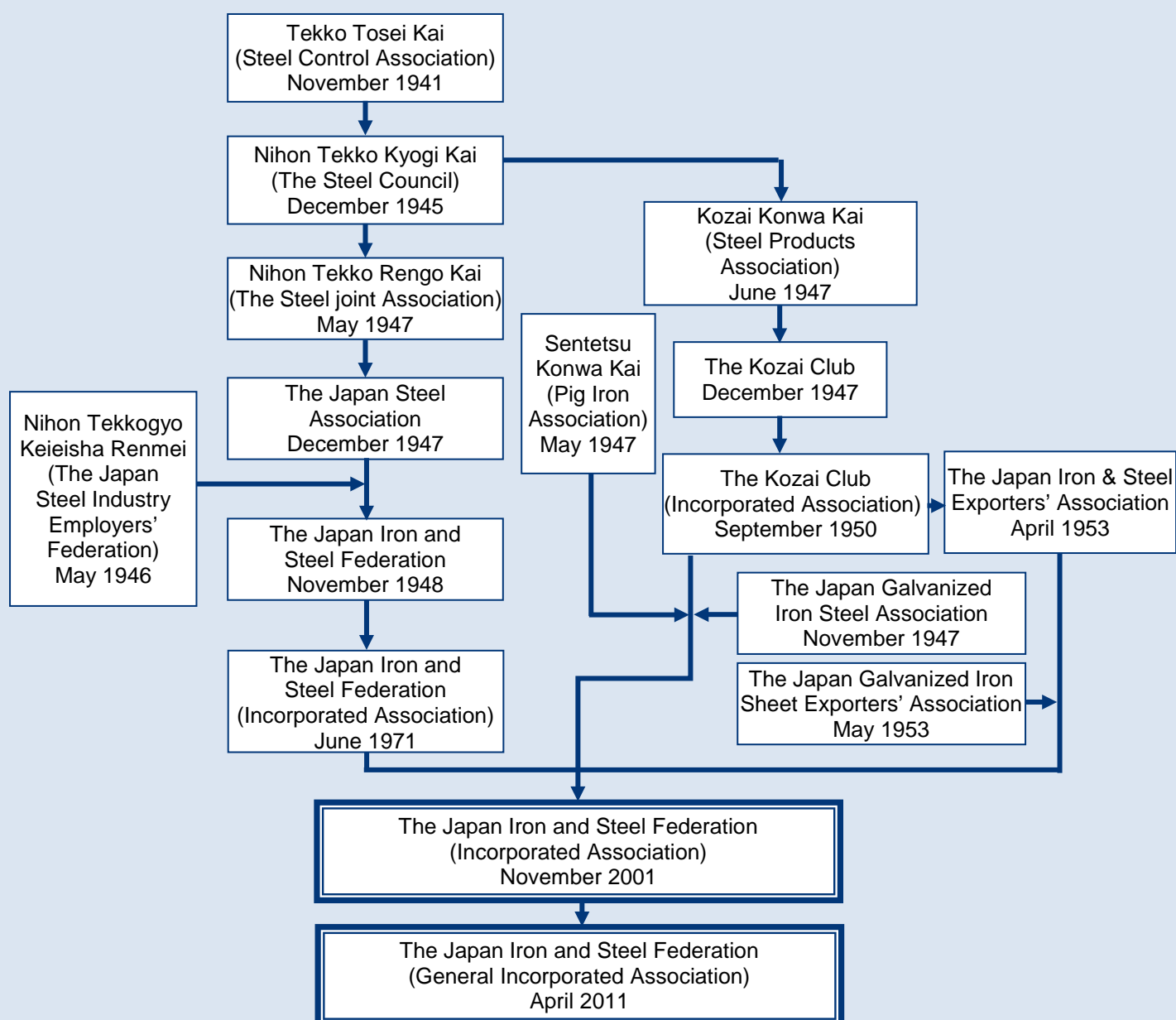
Chronology

The Japan Iron and Steel Federation was founded — after the dissolution of the Tekko Tosei Kai (Steel Control Association) and the various transitions that followed — as a private research institution to carry out comprehensive studies of the steel industry.

JISF was created in November 1948 by the merger of the Nihon Tekko Kai (Japan Steel Association) and the Nihon Tekko Keieisha Renmei (Japan Steel Industry Employers' Federation), a research institute focused on labor problems in the steel industry. The Kozai Club was established in 1947 as an organization descended from the Kozai

Konwa Kai (Steel Products Association) and the Sentetsu Konwa Kai (Pig Iron Association) and was consolidated with the Japan Galvanized Iron Steel Association in March 2001. Meanwhile, the Japan Iron & Steel Exporters' Association which was founded in 1953, was consolidated with the Japan Galvanized Iron Sheet Exporters Association in April 2001. In November 2011, JISF, the Kozai Club and the Japan Iron & Steel Exporters' Association were consolidated into one association to make a fresh start as a new JISF.

Chronology of the Japan Iron & Steel Federation



Note: The month and year shown above are those of establishment of the organization.

Objectives and Summary of Activities

JISF's primary objectives are to promote the sound production, distribution, consumption and trade of steel products, thereby contributing to the development of the Japanese economy and the improvement of people's lives. To attain these objectives, JISF carries out the following activities.

1. Research and studies on steel production, distribution, trade and consumption
2. Promotion of the development, improvement and diffusion of steel-related technologies
3. Research and studies on steel-related environmental and safety issues and promotion of relevant measures
4. Research and studies on the improvement and streamlining of steel-related work and management conditions
5. Promotion of steel-related standardization
6. Acceleration of steel transaction streamlining
7. Promotion of measures for developing steel trade
8. Collection and provision of steel-related information
9. Expressing and offering opinions and producing reports on steel-related matters to the government and relevant organizations
10. Other activities necessary for the attainment of JISF's objectives

Members

JISF consists of iron and steel producers, and distributing processors who engage in steel processing and sales. Its members are categorized in the three groups below.

JISF Members

- **General members (iron and steel producers):**

These are companies engaged in ironmaking, steelmaking, rolling or other iron and steel-related operations, and organizations made up of these companies. They take charge of and receive benefits from all JISF operations and functions.

- **Specialized members (other iron and steel producers and associations):**

These are companies engaged in ironmaking, steelmaking, rolling or other iron and steel-related operations, and organizations made up of these companies. They take charge of and receive benefits from operations and functions related to political measures.

- **Market trade members (other iron and steel producers, trading companies and associations):**

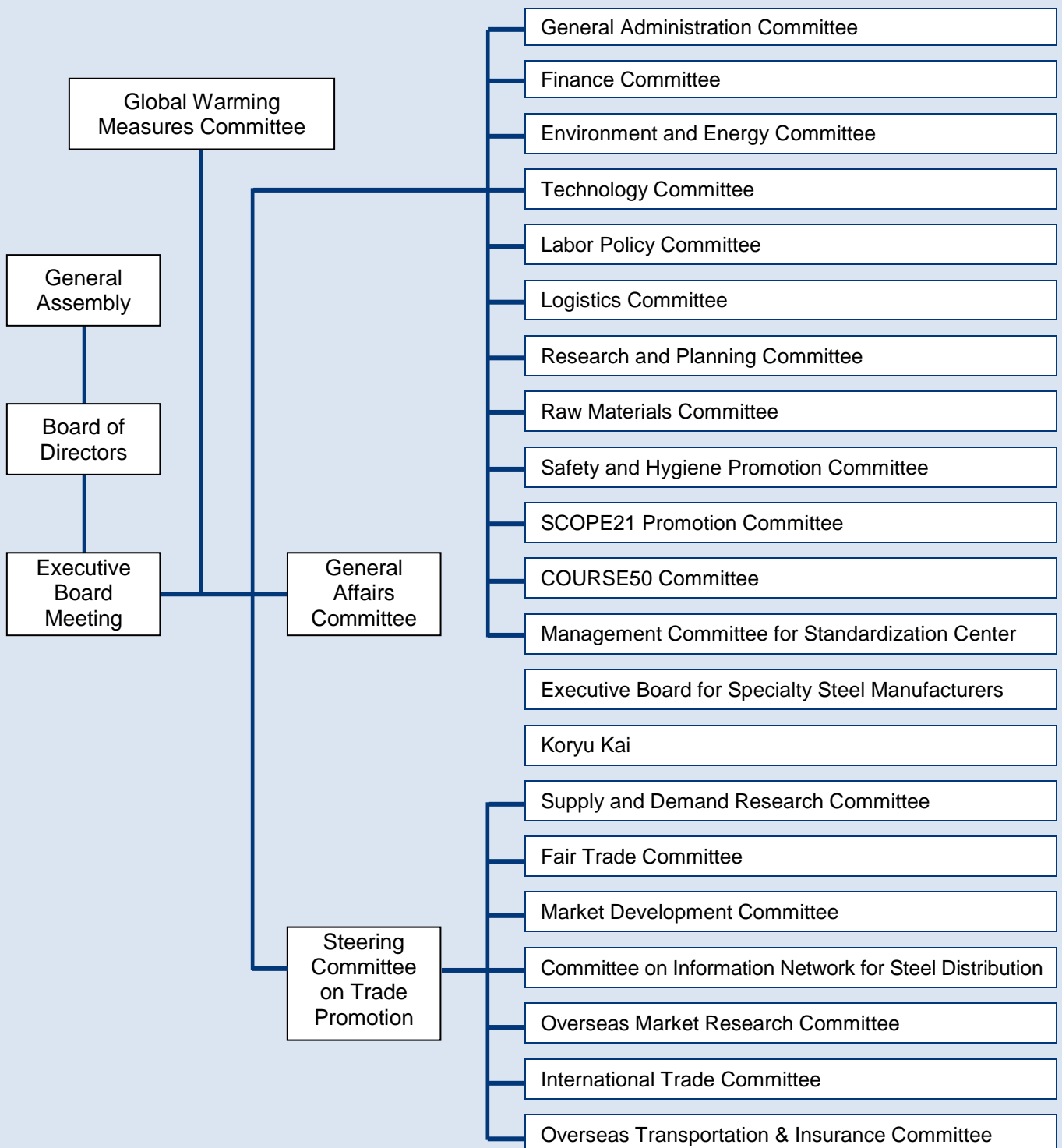
These are companies engaged in the manufacturing or processing and marketing and exporting of steel products, and organizations made up of these companies. They take charge of and receive benefits from market-related operations and functions.

Committee Organization

Every committee is under the top decision-making bodies, the General Assembly and Board of Directors.

JISF Committee Organization

(As of June 1, 2017)



Committee Organization

Committee	Business
General Assembly	Composed of representatives of regular JISF members. Makes decisions on matters for deliberation related to JISF operations including financial budgets and reports, business plans and reports, and appoints executive officers.
Board of Directors	Composed of directors. Determines the execution of the General Assembly's decisions, matters to be submitted to General Assembly and matters related to the execution of JISF business, and appoints executive directors.
Executive Board Meeting	Discusses and executes matters to be submitted to the Board of Directors for deliberation as well as matters related to the execution of overall operations of JISF.
Global Warming Measures Committee	As a mission committee appointed by the chairman of JISF, discusses basic measures concerning global warming issues relevant to the steel industry.
General Affairs Committee	Discusses deliberation matters related to financial budgets and reports, business plans and reports, JISF membership fees and other important matters related to organizational restructuring, publicity policies and other general operational issues of JISF.
General Administration Committee	Coordinates administrative matters to be addressed by the steel industry and discusses matters related to the industry's social contribution.
Finance Committee	Discusses tax systems, accounting methods, financial resources and other financial matters in the steel industry.
Environment and Energy Committee	Discusses basic measures for issues related to the global environment, environmental conservation, recycling and disaster prevention relevant to the steel industry and issues concerning energy supply and demand (including electricity), technologies for effective use of energy and promotion of energy saving.
Technology Committee	Discusses basic and strategic issues concerning steel technologies and determines the direction of technological development.
Labor Policy Committee	Discusses and studies all issues concerning labor policies in the steel industry, including labor administration, employment, industrial engineering/self-improvement (Jishu Kanri) activities, social security systems and other matters.
Logistics Committee	Discusses issues concerning streamlining of steel-related logistics, including transportation, cargo handling and storage of steel products and raw materials, and revisions to systems used for cargo transported by ship.
Research and Planning Committee	Discusses short-range steel demand forecasts to be submitted to the World Steel Association (worldsteel) and mid and long term prospects for the Japanese steel industry.
Raw Materials Committee	Researches and discusses general issues concerning raw materials in the steel industry.
Safety and Hygiene Promotion Committee	Manages planning and implementation of safety and hygiene-related activities in the steel industry in an integrated manner, and supports steel manufacturers' safety and hygiene programs through diverse research and studies and development and promotion of guidelines.
SCOPE21 Promotion Committee	Manages results of research on "Super Coke Oven for Productivity and Environment Enhancement in the 21st Century" (SCOPE21) for effective use, higher productivity, environmental improvement, and energy saving of coal resources.

Committee Organization

Committee	Business
COURSE50 Committee	Promotes research, manages results of research projects and performs other activities concerning practical applications for the CO ₂ Ultimate Reduction in Steelmaking process by Innovative technology for cool Earth 50 (COURSE50). The goals are to develop and utilize technologies for reducing blast furnace CO ₂ emissions and separating and recovering CO ₂ from blast furnace gases.
Management Committee for Standardization Center	Discusses issues concerning iron and steel standardization activities of the Standardization Center, including basic policies to promote standardization, business plans and reports, financial budgets and reports and management and operation.
Executive Board for Specialty Steel Manufacturers	Exchanges information and carries out discussions on various issues, including specialty steel demand forecasts, new demand development, environment and energy, electricity, raw materials and specialty steel-related projects and, if necessary, determines appropriate actions to be taken by specialty steel manufacturers.
Koryu Kai	Provides and exchanges information on steel business among members manufacturing exclusively rolling metals, ferrous alloys, cast metals and some specialty steel, as well as exchanges opinions on issues related to the industry.
Steering Committee on Trade Promotion	Conducts steel market-related operational committees and provides various information on the markets.
Supply and Demand Research Committee	Collects information and research and analysis on steel supply and demand, and provides outcomes widely through survey reports.
Fair Trade Committee	Studies trends of Japan's iron and steel imports and its influence on the country's steel industry.
Market Development Committee	Promotes R&D on new products, applications and application technologies. Also, expands use of steel products and develops overseas markets.
Committee on Information Network for Steel Distribution	Develops standards and promotes electronic data interchange (EDI) for electronic commerce (EC) in the steel and steel-related industries.
Overseas Market Research Committee	Conducts fundamental research worldwide on economic trends, steel supply-demand, and the steel trade trends, special research on specific markets and issues, and research on overall short-term outlook of the environment for Japan's steel exports.
International Trade Committee	Promotes sound development of international steel trade through gathering and analyzing information on steel trade issues, and assists the Japanese government in its dialogs on steel-related issues as well as in its negotiations of Economic Partnership Agreements (EPAs) with foreign counterparts.
Overseas Transportation & Insurance Committee	Conducts diverse surveys on maritime transportation, responds to the introduction of new schemes in overseas countries, and concludes special agreements for export floating insurance between the Nippon Export and Investment Insurance. Also, reviews and negotiates regarding issues concerning the operation of international trade insurance systems.

Office Organization

The secretariat of the Japan Iron and Steel Federation, under the supervision of the executive director and managing directors, is composed of three divisions in a head office, and two overseas offices. In accordance with policies determined by its committees, the JISF secretariat carries out its mandates and develops diversified activities in an attempt to understand the situations of steel industry at both domestic and overseas.

* The organizations in brackets [] below are committees under the supervision of the relevant JISF division.

General Administration Division

[General Assembly, Board of Directors, Steering Committee, General Affairs Committee, Market Committee, Operations Committee, Koryu Kai, Committee on Information Network for Steel Distribution, IE Related Committee, Library Service]

- Formulation and compilation of business plans and financial budgets and statements
- Operation and management of the General Assembly and the Board of Directors
- Publicity and cooperation to social contribution activities
- Library
- Operation and management of computer and network systems
- Promotion of steel-EDI (for electronic commerce)
- Promotion of IE activities, etc.
- Development of management bases, for example, business related to deregulation

Technology, Environment & Energy Division

[Global Warming Measures Committee, Technology Committee, Environment and Energy Committee, SCOPE21 Promotion Committee, COURSE50 Committee]

- Activities involving global environmental issues and initiatives concerning the environment, energy, and electricity supply and demand
- Joint research and surveys on facilities and technologies

Operations Division

[International Trade Committee, Fair Trade Committee, Overseas Market Research Committee, Supply and Demand Research Committee, Research and Planning Committee, Executive Board for Specialty Steel Manufacturers, Labor Policy Committee, Safety and Hygiene Promotion Committee, Self-improvement (Jishu Kanri) activities, Finance Committee, Market Development Committee, Raw Materials Committee, Logistics Committee, Overseas Transportation & Insurance Committee,]

- Surveys and analysis related to steel export and overseas markets
- Providing technical assistance to overseas and keeping contact with the South East Asia Iron & Steel Institute
- Studies and surveys related to overseas trade issues to promote fair trade
- Studies and research related to domestic steel production, demand and supply, markets and economic conditions
- Studies and research related to domestic steel consuming industries
- Compilation, maintenance and publication of industry statistics and collection and analysis of general statistics
- Labor policy issues
- Safety and hygiene management and industrial accident prevention
- Promotion of self-improvement (Jishu Kanri) activities
- Tax systems, accounting procedures and financing
- Activities to develop steel markets in construction, civil engineering, bridges and shipbuilding sectors
- Promotional activities for steel products and their application technologies
- Activities to improve logistics efficiency and revisions to systems used for cargo transported by ship
- Raw materials
- Export transportation and trade insurance

Standardization Center

[Management Committee for Standardization Center]

- Establishing standards of steel and raw materials for steel
- Activities as the secretariat for ISO committees, distribution of Japanese Steel Standard (JSS) certified reference materials

Beijing Office

South East Asia Regional Office

The Japan Iron and Steel Federation

Tokyo Head Office **3-2-10, Nihonbashi-Kayabacho, Chuo Ward, Tokyo 103-0025 Japan**
Tel: +81 -3-3669-4811 Fax: +81 -3-3664-1457 <http://www.jisf.or.jp>

General Administration Division

Administration & Public Relations Group (Administration, Business Support)	Tel +81-3-3669-4811	Fax+81-3-3664-1457
Administration & Public Relations Group (Secretariat)	+81-3-3669-4813	+81-3-3664-0221
Administration & Public Relations Group (Public Relations)	+81-3-3669-4822	+81-3-3664-1457
Personnel Group	81-3-3669-4812	+81-3-3664-0224
Accounting Group	81-3-3669-4814	+81-3-3664-1457
Information Systems Group	+81-3-3669-4820	+81-3-3639-5249
Library	+81-3-3669-4821	+81-3-3669-5586

Technology, Environment & Energy Division

Climate Change Policy Group	Tel +81-3-3669-4837	Fax +81-3-3669-0228
Technology & Environmental Affairs Group	+81-3-3669-4824	+81-3-3669-0228

Operations Division

Domestic Market Research Group	Tel +81-3-3669-4819	Fax +81-3-3669-0229
Domestic Market Research Group (Raw Materials & Logistics)	+81-3-3669-4838	+81-3-3667-0245
Statistics Group	+81-3-3669-4817	+81-3-3669-0229
International Trade & Overseas Market Research Group(International Trade)	+81-3-3669-4835	+81-3-3661-0798
International Trade & Overseas Market Research Group(Overseas Market Research)	+81-3-3669-4818	+81-3-3661-0798
Market Development Group	+81-3-3669-4815	+81-3-3667-0245
Legal & Financial Affairs Group	+81-3-3669-4832	+81-3-3667-0245
Labor Relations & Safety Group	+81-3-3669-4823	+81-3-3667-0245

Standardization Center

Tel +81-3-3669-4826 Fax +81-3-3669-0226

Beijing Office

**Room 901, Jingtai Tower, 24 Jianguomenwai-Street,
 Chaoyang-District, Beijing 100022 China**
Tel: +86-10-6515-6678/6278 Fax: +86-10-6515-6694

South East Asia Regional Office

**Suite 8-1 & 8-2, Level 8, Menara CIMB,
 No.1, Jalan Stesen Sentral 2,50470 Kuala Lumpur, Malaysia**
Tel: +60 (3) 2298 8307 Fax: +60 (3) 2298 8201