



The Japan Iron and Steel Federation (JISF) was established in November 1948. In November 2001, it was completely reorganized through consolidation with the Kozai Club and the Japan Iron & Steel Exporters' Association. The JISF is a nationwide representative body of the Japanese steel industry and its members consist of the country's major iron and steel producers, trading companies, and organizations engaged in steel distribution.

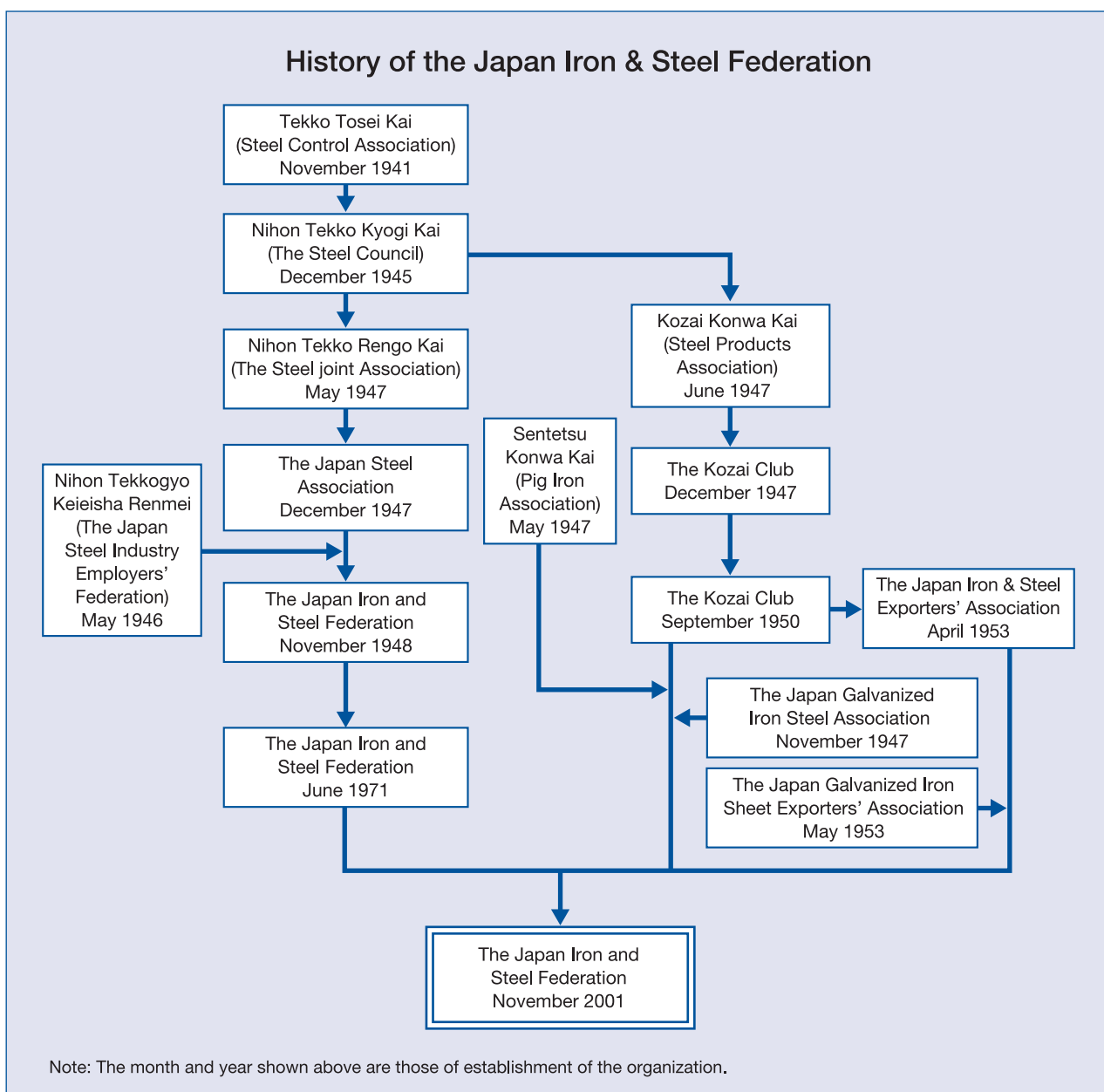
Steel is a basic material indispensable for industrial development and the improvement of people's lives. It is also one of Japan's most important exports. The JISF contributes to the sound growth of the national economy and promotes international cooperation by taking on challenges from the overall standpoint of the Japanese steel industry. To these ends, the JISF carries out extensive activities that include compiling statistics and conducting research and studies on steel production, demand and distribution; promoting the development and diffusion of new technologies for steel production and products; addressing environmental issues; improving and streamlining work and management conditions; enhancing standardization and promoting fair steel trade.

Term	Chairman	Period
1	Takashi Miki	November 1948 – April 1952
2	Gisuke Watanabe	May 1952 – January 1956
3	Shinichi Kojima	February 1956 – April 1963
4	Shigeo Nagano	April 1963 – April 1965
5	Yoshihiro Inayama	April 1965 – April 1979
6	Eishiro Saito	April 1979 – April 1984
7	Yutaka Takeda	April 1984 – May 1989
8	Hiroshi Saito	May 1989 – May 1995
9	Takashi Imai	May 1995 – May 1998
10	Akira Chihaya	May 1998 – May 2003
11	Akio Mimura	May 2003 – May 2006
12	Hajime Bada	May 2006 – May 2008
13	Shoji Muneoka	May 2008 – present

History

The Japan Iron and Steel Federation was founded—after the dissolution of the Tekko Tosei Kai (Steel Control Association) and the various transitions that followed—as a private research institution to carry out comprehensive studies of the steel industry.

The JISF was created in November 1948 by the merger of the Nihon Tekko Kai (Japan Steel Association) and the Nihon Tekko Keieisha Renmei (Japan Steel Industry Employers' Federation), a research institute focused on labor problems in the steel industry. The Kozai Club was established in 1947 as an organization descended from the Kozai Konwa Kai (Steel Products Association) and the Sentetsu Konwa Kai (Pig Iron Association) and was consolidated with the Japan Galvanized Iron Steel Association in March 2001. Meanwhile, the Japan Iron & Steel Exporters' Association, which was founded in 1953, was consolidated with the Japan Galvanized Iron Sheet Exporters' Association in April 2001. In November 2001, the JISF, the Kozai Club and the Japan Iron & Steel Exporters' Association were consolidated into one organization to make a fresh start as a new JISF.



The JISF's Objectives and Summary of Activities

The JISF's primary objectives are to promote the sound production, distribution, consumption and trade of steel products, thereby contributing to the development of the Japanese economy and the improvement of people's lives. To attain these objectives, the JISF carries out the following activities.

1. Research and studies on steel production, distribution, trade and consumption
2. Promotion of the development, improvement and diffusion of steel-related technologies
3. Research and studies on steel-related environmental and safety issues and promotion of relevant measures
4. Research and studies on the improvement and streamlining of steel-related work and management conditions
5. Promotion of steel-related standardization
6. Acceleration of steel transaction streamlining
7. Promotion of measures for developing steel trade
8. Collection and provision of steel-related information
9. Expressing and offering opinions and producing reports on steel-related matters to the government and relevant organizations
10. Other activities necessary for the attainment of the JISF's objectives

Association Members

The JISF consists of iron and steel producers, and distributing processors who engage in steel processing and sales. Its members are categorized in the three groups below.

JISF Members

General members (iron and steel producers):

These are companies engaged in ironmaking, steelmaking, rolling or other iron and steel-related operations, and organizations made up of these companies. They take charge of and receive benefits from all JISF operations and functions.

Specialized members (other iron and steel producers and associations):

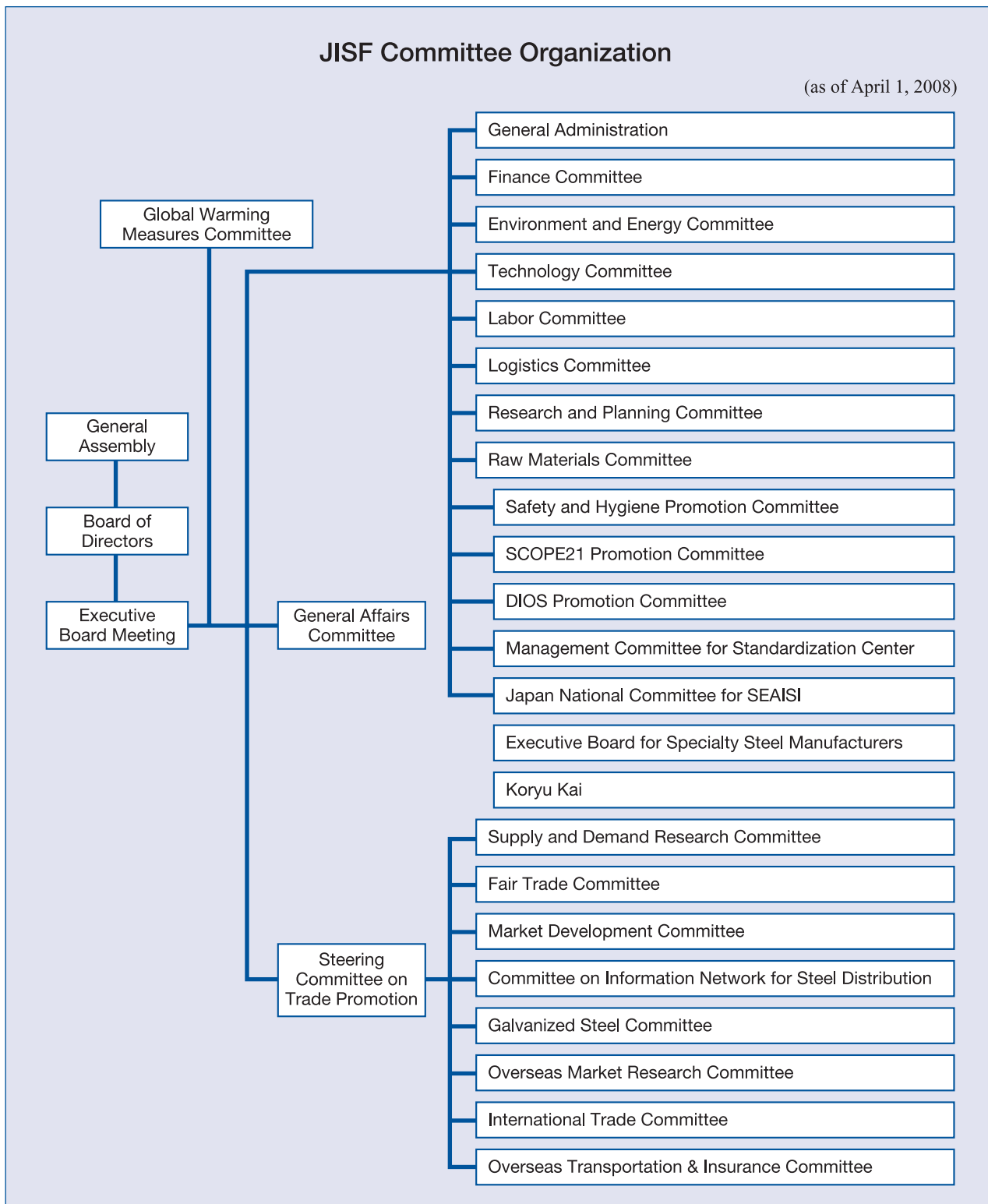
These are companies engaged in ironmaking, steelmaking, rolling or other iron and steel-related operations, and organizations made up of these companies. They take charge of and receive benefits from operations and functions related to political measures.

Market trade members (other iron and steel producers, trading companies and associations):

These are companies engaged in the manufacturing or processing and marketing and exporting of steel products, and organizations made up of these companies. They take charge of and receive benefits from market-related operations and functions.

Committee Organization

Every committee is under the top decision-making bodies, the General Assembly and Board of Directors.



Committee	Business
General Assembly	Composed of representatives of regular JISF members. Makes decisions on matters for deliberation related to JISF operations including financial budgets and reports, business plans and reports, and appoints executive officers.
Board of Directors	Composed of directors. Determines the execution of the General Assembly's decisions, matters to be submitted to General Assembly and matters related to the execution of JISF business, and appoints executive directors.
Executive Board Meeting	Discusses and executes matters to be submitted to the Board of Directors for deliberation as well as matters related to the execution of overall operations of JISF.
Global Warming Measures Committee	As a mission committee appointed by the chairman of JISF, discusses basic measures concerning global warming issues relevant to the steel industry.
General Affairs Committee	Discusses deliberation matters related to financial budgets and reports, business plans and reports, JISF membership fees and other important matters related to organizational restructuring, mid-term program planning, publicity policies and other general operational issues of JISF.
General Administration Committee	Coordinates administrative matters to be addressed by the steel industry and discusses matters related to the industry's social contribution.
Finance Committee	Discusses tax systems, accounting methods, financial resources and other financial matters in the steel industry.
Environment and Energy Committee	Discusses basic measures for issues related to the global environment, environmental conservation, recycling and disaster prevention relevant to the steel industry and issues concerning energy supply and demand (including electricity), technologies for effective use of energy and promotion of energy saving.
Technology Committee	Discusses basic and strategic issues concerning steel technologies and determines the direction of technological development.
Labor Committee	Discusses general issues concerning labor policies in the steel industry, including labor administration, employment, safety and hygiene and skill development.
Logistics Committee	Discusses issues concerning streamlining of steel industry-related logistics, including transportation, cargo handling and storage of steel products and raw materials.
Research and Planning Committee	Discusses short-term steel demand forecasts to be submitted to the International Iron and Steel Institute (IISI) and mid- and long-term prospects for the Japanese steel industry.
Raw Material Committee	Researches and discusses general issues concerning raw materials in the steel industry.
Safety and Hygiene Promotion Committee	Manages planning and implementation of safety and hygiene-related activities in the steel industry in an integrated manner, and supports steel manufacturers' safety and hygiene programs through diverse research and studies and development and promotion of guidelines.
SCOPE21 Promotion Committee	Promotes the practical application of and manages research on "Super Coke Oven for Productivity and Environment Enhancement in the 21st Century" (SCOPE21) for effective use, higher productivity, environmental improvement, and energy saving of coal resources.
DIOS Promotion Committee	Promotes the practical application and manages research results of the "direct iron ore smelting reduction process" developed under a joint research program.

Management Committee for Standardization Center	Discusses issues concerning iron and steel standardization activities of the Standardization Center, including basic policies to promote standardization, business plans and reports, financial budgets and reports and management and operation.
Japan National Committee for SEAFISI	Contributes, as a regular and supporting member country of the South East Asia Iron and Steel Institute (SEAFISI), to the institute's board of directors and major activities such as publication of iron and steel-related technical papers, technological exchanges, organization of seminars and other regional cooperation related to iron and steel statistics and environmental issues.
Executive Board for Specialty Steel Manufacturers	Exchanges information and carries out discussions on various issues, including specialty steel demand forecasts, new demand development, environmental energy, electricity, raw materials and specialty steel-related projects and, if necessary, determines measures to be taken by specialty steel manufacturers.
Koryu Kai	Provides and exchanges information on steel business among members manufacturing exclusively rolling metals, ferrous alloys, cast metals and some specialty steel, as well as exchanges opinions on issues related to the industry.
Steering Committee on Trade Promotion	Controls steel market-related operational committees and provides various information on the markets.
Supply and Demand Research Committee	Collects information on and conducts surveys and analysis on steel supply and demand, and provides information widely through survey reports.
Fair Trade Committee	Studies the status of Japan's iron and steel import and its influence on the country's steel industry.
Market Development Committee	Promotes understanding of the actual use and future trends of steel products in steel demand source sectors, and promotes R&D on new products, applications and application technologies. Also, expands use of steel products and develops overseas markets.
Committee on Information	Promotes development of standards for electronic commerce (EC) and electronic data interchange (EDI) in the steel industry and related industries.
Galvanized Steel Committee	Develops demand and conducts technical research on galvanized sheets. Also, expands use of galvanized steels and understands domestic and overseas market trends appropriately.
Overseas Market Research Committee	Conducts basic surveys on other countries' economic situations, steel supply and demand, and steel trade trends, and special surveys on specific markets and issues. Also conducts surveys and makes short-term forecasts of the overall environment for steel exports surrounding Japan.
International Trade Committee	Promotes the development of steel trade through collecting and analyzing information on steel trade issues, and assists dialogs on steel-related issues with other parties and the Japanese government in the EPA.
Overseas Transportation & Insurance Committee	Conducts diverse surveys on maritime transportation, responds to the introduction of new schemes in overseas countries, and concludes special agreements for export floating insurance between the Nippon Export and Investment Insurance. Also, reviews and negotiates regarding issues concerning the operation of international trade insurance systems.

Office Organization

The office of the Japan Iron and Steel Federation, under the supervision of the executive director and managing director, is composed of four divisions, one center and one overseas office. In accordance with policies determined by its committees, the JISF office operates to carry out its duties and understand more about domestic and overseas steel industries and their situations.

* The organizations in brackets [] below are committees under the supervision of the relevant JISF division.

General Administration Division

[General Assembly, Board of Directors, Executive Board Meeting, General Administration Committee, Steering Committee on Trade Promotion, General Administration Committee, Labor Committee, Safety and Hygiene Promotion Committee and Koryu Kai]

- Formulation and compilation of business plans and financial budgets and statements
- Business related to the General Assembly and the Board of Directors and their management
- Publicity and cooperation to social contribution activities
- Library
- Business related to labor policies
- Business related to safety and hygiene management and industrial accident prevention
- Business related to promotion of self-improvement (*Jishu Kanri*) activities ● Others

Market Research & Development Division

[Supply and Demand Research Committee, Research and Planning Committee, Logistics Committee, Raw Materials Committee, Market Development Committee, Galvanized Steel Committee, Finance Committee, Committee for Information Network for Steel Distribution and Executive Board for Specialty Steel Manufacturers]

- Business related to domestic steel production, demand and supply, markets and economic conditions
- Business related to domestic demand source industries
- Business related to streamlining of steel logistics
- Business related to raw materials
- Business to develop steel markets in construction, civil engineering, bridges and shipbuilding sectors
- Promotional activities for steel products and their application technologies
- Business related to tax systems, accounting procedures, financing and capital investment
- Business related to development of management bases, for example, business related to deregulation
- Preparation, maintenance, publication of industry statistics and collection and analysis of other various statistics
- Promotion of steel-EDI (for electronic commerce)
- Operation and management of computers and network systems
- Business related to promotion of IE activities ● Others

International Economic Affairs Division

[Fair Trade Committee, International Trade Committee, Overseas Market Research Committee, Overseas Transportation & Insurance Committee and Japan National Committee for SEAIS]

- Business related to steel export and overseas markets
- Business related overseas trade issues and measures against unfair import
- Business related to overseas technical assistance and the South East Asia Iron & Steel Institute
- Business related to export transportation and trade insurance ● Others

Technology, Environment & Energy Division

[Global Warming Measures Committee, Technology Committee, Environment and Energy Committee, SCOPE21 Promotion Committee and DIOS Promotion Committee]

- Business related to global environmental issues and measures for the environment and energy
- Joint research and surveys on facilities and technologies ● Others

Standardization Center

[Management Committee for Standardization Center]

- Business related to standards for steels and raw materials
- Business as the secretariat for ISO committees ● Others

Beijing Office

Office Locations and Telephone Numbers

The Japan Iron and Steel Federation

Tokyo Head Office 3-2-10, Nihonbashi-Kayabacho, Chuo-ku, Tokyo 103-0025 Japan
Tel: +81-3-3669-4811 Fax: +81-3-3664-1457
www.jisf.or.jp

General Administration Division

General Affairs Group	Tel +81-3-3669-4811	Fax +81-3-3664-1457 (General Affairs)
Secretarial Affairs & Public Relations Group	+81-3-3669-4813	+81-3-3669-0221 (Secretarial Affairs)
	+81-3-3669-4822	+81-3-3664-1457 (Public Relations)
Accounting Group	+81-3-3669-4814	+81-3-3664-1457
Personnel Affairs Group	+81-3-3669-4812	+81-3-3669-0224
Labor Relations & Safety Group	+81-3-3669-4823	+81-3-3669-0228
Work Restructuring Group	+81-3-3669-4860	+81-3-3664-1457
	+81-3-3669-4821	+81-3-3669-5586 (Library)

Market Research & Development Division

Domestic Market Research Group	Tel +81-3-3669-4819	Fax +81-3-3669-0229
Market Development Group	+81-3-3669-4815	+81-3-3667-0245
Legal & Financial Affairs Group	+81-3-3669-4832	+81-3-3639-5249
Information Systems Group	+81-3-3669-4820	+81-3-3639-5249

International Economic Affairs Division

International Trade & Cooperation Group	Tel +81-3-3669-4818	Fax +81-3-3661-0798
Overseas Market Research Group	+81-3-3669-4835	+81-3-3661-0798

Technology, Environment & Energy Division

Technology, Environment & Energy Group	Tel +81-3-3669-4824	Fax +81-3-3669-0228
--	---------------------	---------------------

Standardization Center

Tel +81-3-3669-4826 Fax +81-3-3669-0226

Beijing Office

Room 2206, Jingtai Tower, 24 Jianguomenwai-Street,
Chaoyang-District, Beijing 100022 China
Tel: +86-10-6515-6678 or 6278 Fax: +86-10-6515-6694