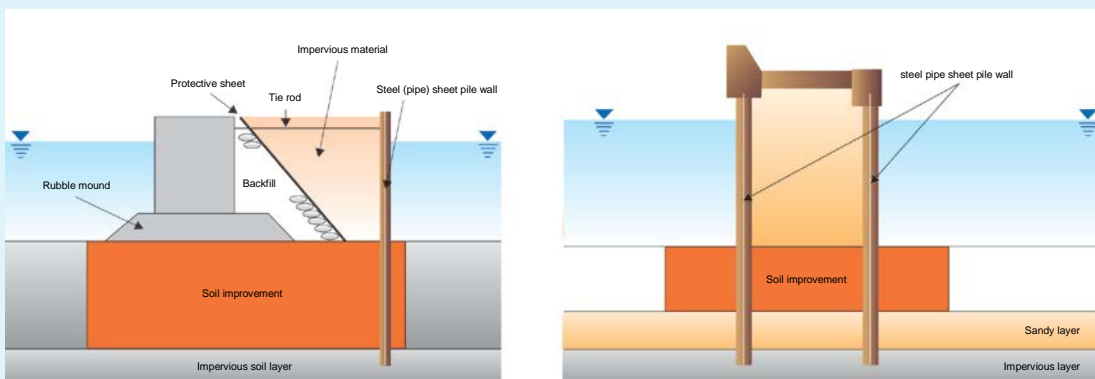


# Water shield revetment using steel sheet piles and steel pipe sheet piles

Construction method that gives outstanding water shield and seismic resistance to revetment in sea-surface waste disposal sites.

## ■ Merits

1. Water shield revetment with high reliability and extensive record
2. Outstanding water shield and seismic resistance under the ordinance on standards in Japan
3. Easy work executing employing hydraulic hammers or vibro-hammers



## < Water stoppage at joint >

- Swellable water shield material is applied on the joint of the steel sheet pile in advance for swelling at completion and contact with water.
- Steel pipe sheet pile is driven after attaching chloroprene rubber on the T joint. After removing soil within the joint, the inside of the joint is filled with mortar.



< Steel sheet pile >

< Steel pipe sheet pile >

# Summary from "Steel Sheet Pile & Steel Pipe Water Shield Walls," Japanese Technical Association for Steel Pipe Piles and Sheet Piles

## Applicable sector

Ports (Waste disposal site)  
Urban cities (Soil pollution area, Pond)

## Features

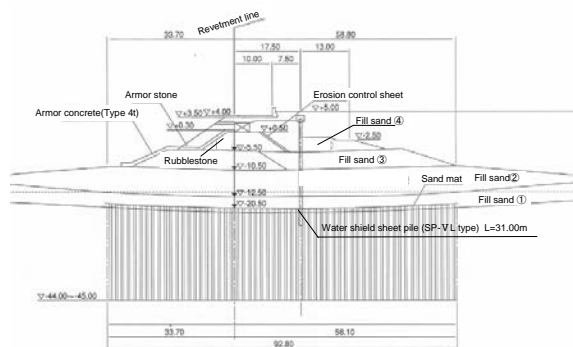
1. Water shield with high reliability  
Because water shield performance of sheet piles and pipe sheet piles is confirmed by the test in the actual sea, the wall with high water shield and durability can be constructed.
2. Outstanding economical benefit  
Appropriate choice of steel sheet pile type, steel pipe sheet diameter and thickness realizes resilient and outstanding seismic resistance and economical water shield structure.
3. Easy work  
Construction work can be done employing the same driving machine (hydraulic hammer, vibro-hammer and press-in) as that of ordinary steel sheet pile.

## Track Record



Tokushima prefecture Awazu Port sea surface disposal site  
(Steel pipe sheet pile)

In Japan : Kobe offing disposal ground, Awazu, Tokushima  
Port disposal ground Hibikinada Port, Mizushima Port and others



Kobe offshore disposal site (Steel sheet pile)

## Cost

Refer to the under-mentioned contact section about details

## Contact

Market Development Group Management Policy Planning Division  
The Japan Iron and Steel Federation

MAIL:[sunpou@jjsf.or.jp](mailto:sunpou@jjsf.or.jp)  
TEL: +81-3-3669-4815

FAX: +81-3-3667-0245